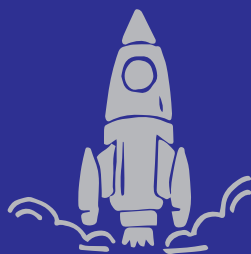


STUDENT GUIDE [2020-2021]

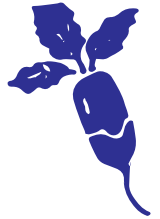
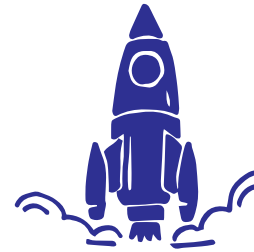
WELCOME !



english.univ-nantes.fr/welcome-toolbox



UNIVERSITÉ DE NANTES



[EDITORIAL]

Dear students,

As a new academic year begins, all of us at Université de Nantes are pleased to welcome students especially those who have just received their high school diploma.

Every year, there are more than 37,000 students preparing one of our 164 degrees within one of our 20 components. Owing to the recent public health issues, we have had to introduce exceptional plans to make it possible to bring back students while respecting social distancing. Nonetheless, we invite you to get your bearings on campus and discover all the facilities and services on offer. Our teams are on hand every day to ensure you can enjoy the best possible conditions. The future depends on educating young people and fostering innovation and research. Our university is proud and happy to welcome you among us this year and our aim is clear: to create conditions that enable each and every student to thrive and find fulfilment.

Pursuing a degree, whether in a university program, a technical or vocational field, always requires a strong personal investment. Whatever your goal may be, all of us at Université de Nantes are committed to helping you carry it out in the best conditions.

While implementing your project and building your future, you also have the opportunity to get involved on campus. We are devoted to supporting your initiatives and guiding you in your projects.

We are proud to welcome 150 student associations from a wide variety of interests on our campuses. These associations promote expression, exchange and citizenship awareness among the student body and are all essential for the high standing of the University.

We are committed to enabling project planning, fulfilment of ambition, cultivation of differences and to connecting talents.

We hope you have an exciting year, full of audacity, creativity and success and We pledge a strong and unfailing support from our University.

The Université de Nantes management team



U!
N
N
N
N
N

EQUAL OPPORTUNITIES

UNIVERSITÉ DE NANTES: UNIQUE AND NEW

UN!

UNIQUE AND NEW

A New and Unique university model.

Université de Nantes has never stopped moving forward. In the last 50 years, Université de Nantes has taken training and research to the highest level and **has become part of the Times Higher Education, Shangai ranking...**

More than ever, the Université de Nantes is focused on students and puts personal development at the heart of our ambitions.

iN!

OPEN AND CITIZEN-MINDED

The Université de Nantes: playing a full role in city life.

The Université de Nantes has a firm rooting in our city, which is renowned for its quality of life, cultural vibrancy and economic dynamism. The university has **37,000 students** and **3,900 members** of staff, 50% of whom are dedicated to research.

That means that **1 out of every 12 Nantes residents either studies or work at the university.**

The influence of the Université de Nantes is spread even wider thanks to its major academic institutes in **Saint-Nazaire** and **La Roche-sur-Yon**. It also contributes hugely to the area's cultural, sporting and social fabric and helps to stimulate it by enriching public debate and disseminating knowledge, resources and potential and spurring creative meetings of minds. Last but not least, the acclaimed skills of our researchers and laboratories make the Université de Nantes a big and essential driver of innovation in the region.



1 OUT OF 12 NANTES
RESIDENTS WORKS OR
STUDIES AT UNIVERSITÉ
DE NANTES

UNIVERSITÉ DE NANTES: UNIQUE AND NEW

ON!

CREATIVE AND AUDACIOUS

Student success is our priority.

The Université de Nantes wants our students to succeed. That is why we regularly examine and renew the way our courses and lessons are designed. The Educational Innovation Centre helps tutors to develop new practices.

With the SUIO, students are supported throughout their learning, from the moment they arrive until they enter the labour market. To ensure that students also have opportunities to broaden and deepen personal skills, the Université de Nantes does its utmost to make the university experience as rounded as possible, with an abundance of sporting and cultural activities as well as associations, support groups, enterprise schemes, health services and more.

THE WORLD
UNIVERSITY
RANKINGS

460 | IN 5
CONTINENTS

PARTNER INSTITUTIONS
IN THE WORLD

1ST FRENCH UNIVERSITY | ON YouTube
 twitter

10,500 PER YEAR
GRADUATES | 85% OF BACHELORS
AND MASTERS
DEGREES FIND
A STEADY JOB

150 ASSOCIATIONS | 50 FINANCIALLY
SUPPORTED
STUDENT
PROJECTS

SOCIAL DISTANCING

COVID-19

CORONAVIRUS: IN ORDER TO PROTECT YOURSELF AS WELL AS OTHERS



Wash your hands regularly



Cough or sneeze into your elbow or a tissue



Use single-use tissues and throw them away



Do not shake hands or embrace one another

Do you have questions regarding the coronavirus?



[GOUVERNEMENT.FR/INFO-CORONAVIRUS](https://gouvernement.fr/info-coronavirus)



0 800 130 000

(free call)



Pages containing this disc indicate that the start of term organisation and information provided on these pages may change depending on the coronavirus situation.

Up-to-date information can be found in our Welcome toolkit at univ-nantes.fr/welcome-toolbox

COVID-19

HOW TO USE YOUR MASK CORRECTLY

How to put your mask on



Wash your hands thoroughly.



Loop the elastic bands behind your ears

or



Tie the laces at the back of your head and neck.



Pinch the rigid edge, if it has one, onto your nose and pull the mask down below your chin.

How to put your mask off



Wash your hands and then remove the mask, touching only the laces or elastic bands.



After use, put it in a plastic bag and throw it away

or



if it is made of fabric, wash it at 60° for 30 minutes.



Wash your hands thoroughly again.

Masks are an additional means of protection and do not replace preventive advice and measures.



[GOUVERNEMENT.FR/INFO-CORONAVIRUS](https://gouvernement.fr/info-coronavirus)



0 800 130 000

(free call)

[CONTENTS]

11 GET STARTED

- 12 WELCOME AND INFORMATION CENTER
- 14 YOUR FIRST DAYS
- 16 PASS SUP', THE STUDENT CARD
- 18 STUDENT INTRANET
- 19 UNIVNANTES MOBILE APP
- 20 SPECIAL ACADEMIC ARRANGEMENTS
- 22 CULTURE
- 24 SPORT ACTIVITIES

27 STUDY

- 28 ACADEMICS
- 30 DIPLOMAS
- 32 EXAMS
- 34 KEY DATES

37 SUCCEED

- 38 10 KEY TIPS
- 40 MAKING A SUCCESS OF YOUR FIRST YEAR
- 42 UNIVERSITY LIBRARY
- 44 BROADENNING YOUR KNOWLEDGE
- 46 CERTIFICATIONS
- 49 LANGUAGE COURSES
- 50 WORKING TOWARDS YOUR CAREER GOALS
- 52 STUDENT ENTREPRENEURSHIP

55 BUDGET

- 56 STUDENT BUDGET

59 TAKE CARE

- 60 STUDENT HEALTH CENTER
- 62 UNIVERSAL HEALTH CARE (SÉCURITÉ SOCIALE)
AND STUDENT COMPLEMENTARY INSURANCE

65 MEALS AND FIND ACCOMMODATION

- 66 GOOD DEALS FOR EATING OUT
OR MAKING YOUR OWN MEALS
- 67 FIND ACCOMMODATION

69 GOING OUT

- 70 PÔLE ÉTUDIANT STUDENT CENTRE
- 72 TURBULENCES
- 73 UNIVERSITY THEATRE

75 GET INVOLVED

- 76 TO BE A STUDENT, TO BE A CITIZEN
- 80 STUDENT INITIATIVES
- 81 FOUNDATION

83 GETTING AROUND

- 84 PUBLIC TRANSPORT IN NANTES AND AROUND
- 85 PUBLIC TRANSPORT IN SAINT-NAZAIRE
AND LA ROCHE-SUR-YON
- 86 CAMPUS MAPS

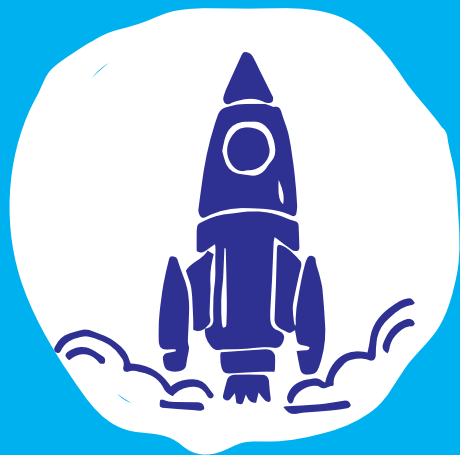
97 DISCOVER

- 98 THE GOVERNANCE OF UNIVERSITÉ DE NANTES

101 FIND OUT MORE

- 102 USEFUL CONTACTS
- 109 GLOSSARY
- 112 NOTES

[GET STARTED]



- 12 WELCOME AND INFORMATION CENTER**
- 14 YOUR FIRST DAYS**
- 16 PASS SUP', THE STUDENT CARD**
- 18 STUDENT INTRANET**
- 19 UNIVNANTES MOBILE APP**
- 20 SPECIAL ACADEMIC ARRANGEMENTS**
- 22 CULTURE**
- 24 SPORT ACTIVITIES**



Guichet Unique - Foreign Students Welcome Center - the first stop for foreign students!

Where is the Guichet Unique?

At the Maison des Échanges Internationaux et de la Francophonie (MEIF), 15 chaussée de la Madeleine in Nantes

Tram 2 or 3 - stop Hôtel Dieu (→ map p. 88 n° 8)

Opening Dates

- Semester 1: September 7th to November 6th, 2020
- Semester 2: January 4th to February 12th
univ-nantes.fr/bienvenue

Opening Hours

9am to 12:30 pm and from 1:30pm to 4:30pm, Monday to Friday

ONLY BY APPOINTEMENT



Welcome at Guichet unique

WELCOME AND INFORMATION CENTER

Guichet Unique Services

At the Guichet Unique, the international relations staff and student mentors will give you all the information you need to get settled in Nantes:

- **Administrative Formalities** for registering at the university and applying for your residence permit;
- **Accommodation information:** housing insurance and information on obtaining renters insurance and applying for a housing allowance from the Family Allowance Fund (CAF);
- **Health Insurance:** universal health insurance (*sécurité sociale*), supplementary health insurance, reimbursement rates, university health service: Student Health Center-SUMPPS (→ p. 60);
- **French banks:** opening a bank account;
- **Student Jobs:** job search information and visa requirements;
- **Transportation Information:**
 - public transport services: Bus and tram (TAN), trains (SNCF),
 - bike rentals,
 - and everything you need to know about how to get around the city and the region;
- **Student Life:** entertainment, cultural activities and regional and international associations.

Contact:

guichet.unique@univ-nantes.fr
univ-nantes.fr/welcome

WELCOME AND INFORMATION CENTER

French Language Courses

The Language Center offers French languages courses for all proficiency levels.

- Full-time semester courses: DUEF « Diplôme Universitaire d'Études Françaises » (18h/week)
- French support courses: Campus Soir (4h/week)
- Summer courses: Campus Été (20h/week)
- French certification training: DELF B2 (2h/week)
- Classes for international PhD students (please refer to your research lab for more information)

Contact: i-fl.e.univ-nantes.fr

Support throughout your stay

The staff at the International Relations Office will provide you with support and assistance throughout your stay in Nantes.

Contact:

international.accueil@univ-nantes.fr

More information on univ-nantes.fr/foreignstudent

Autour du Monde – Erasmus Student Network (ESN)

The association Autour du Monde-ESN Nantes offers various activities and events all year long (buddy program, guided visits, polyglot cafés, parties...).

The association Autour du Monde - ESN Nantes helps you get settled in on your campus and in the city. Duty periods at the Student Center (Pôle étudiant, (→p. 52))

Contact:

esn.nantes@gmail.com

More information on www.esn-nantes.org

The Languages Center (SUL) offers 2 kinds of french certifications for international students (→p. 49)

More information on:
i-fl.e.univ-nantes.fr

The International Relations Office

is located at the Maison des échanges internationaux et de la francophonie (MEIF), 15 chaussée de la Madeleine in Nantes.

Tram 2 or 3 - stop Hôtel Dieu (→ map p. 88 n° 8)

Do you want a buddy when you arrive in September?

Autour du Monde-ESN Nantes connects you for free with a local student buddy.

This intercultural relations and support group will help you meet new people and get settled in!

Help international students settle in Nantes!

The International Relations Office and ESN Nantes - Autour du Monde encourage all Université de Nantes students to mentor international students through the Buddy System.

To sign up and for more information visit:
<https://buddysystem.eu/fr/>

YOUR FIRST DAYS

Remember to check the bulletin boards!

In addition to your intranet, also check the bulletin boards, you'll find:

- schedules
- your tutorial groups (TD)
- teacher absences and make-up classes
- the examination charter, tests, exam schedules and of course your grades
- internship offers and information on student life.

The University Calendar (l'Agenda)

Available online:

univ-nantes.fr/agenda

You will find all necessary information and dates for events organized on your campus.

Check out our Welcome toolkit.

Advice, tips, deals to prepare your university year on: english.univ-nantes.fr/welcome-toolbox



Welcome Week

For the IUT, contact your registrar's office at univ-nantes.fr/scolarites

Your presence is mandatory.

An informative week where professors will explain the academic program, class schedules, testing, and grades. You will also have the opportunity to tour the school.

This is an ideal time to ask any questions you may have, familiarize yourself with the course content, tour the facilities and meet your teachers.

Welcome week calendar

univ-nantes.fr/calendrier

For questions, contact the secretariat of your Faculty, institute or school.

Learning agreement

You are part of an international exchange program? You have to choose all classes you want to attend and give your learning agreement duly signed to your administrative international coordinator by the following deadlines:

- 1st semester: October 9th
- 2nd semester: February 14th

Special academic arrangements

Special arrangements are available for working students, high-level athletes and students with disabilities (→ p. 20)

YOUR FIRST DAYS



Here are some tips, tools and information to help you have a successful academic year.

Your student card is valuable.

Your Pass Sup' is your student ID card. **It proves that you are a student at Université de Nantes.**

Personal, non-transferable and indispensable in your daily life.

Take care of it and carry it with you at all times!
(→ p. 14/15)

Vignette certifying you are registered at classes.

Each year, in order to update your Student Card, log on your intranet, download and print your "vignette"
> **VOS WEBSERVICES**
> **réinscription et autres procédures de scolarité** > **mes documents.**

Your "vignette" must always be kept with your Student Card.

Change your INTRANET password
> **VOS WEBSERVICES** > **Mot de passe**

Read this "welcome" guide

You'll find everything you need to get started and to succeed.

Log into your intranet

univ-nantes.fr/intranet

To log in, you will need:

- **your student card** (your login is the student number preceded by the letter "e")



- **your password** on your registration certificate, issued with your student card, in the to-scratch part.

Your academic information and web services are only available on your INTRANET

By using the university's IT resources you agree to the **IT charter** given to you at registration.

Download your Registration Certificate

You need a Certificate of Enrollment during the year? You can download your Certificate on your INTRANET.
> **VOS WEBSERVICES** > **réinscription et autres procédures de scolarité** > **mes documents.**

Pass Sup'

the student card

The Pass Sup' card is the student card at Université de Nantes. You can also use it to pay at the university restaurants.

You should always carry, with your Pass Sup'Card, the vignette certifying that you are registered.



With your Pass Sup' card you can:

- prove that you are a student at Université de Nantes
- pay for meals at any CROUS restaurant
- borrow books from the University Library
- sign up for sports and fitness activities
- access certain controlled-access areas (parking lots, study rooms, etc.)
- print documents, in Libraries for instance.

More information on:
univ-nantes.fr/carteetudiante



www.crous.fr

Questions?

Do I need to pay for my Pass Sup' card?

The Pass Sup' card is free. However if your card is lost or stolen, you will be charged 10 € for a new card (see below under Assistance).

How long is my Pass Sup' card valid?

Your Pass Sup' card is valid throughout your studies. A new sticker will be placed on your card at the beginning of each academic year.

How do I activate my card?

- Your card is already active and can be used for university services.
- To use it in the university restaurants, you have to activate your "wallet" (IZLY) on line by following the instructions from IZLY services emailed to your university address *firstname.name@etu.univ-nantes.fr*
- In this e-mail you will find your login and password to access your "wallet" on <https://mon-espace.izly.fr>
- If you did not receive it or if you lost it, you can ask for a new one on <https://mon-espace.izly.fr/Auth/SendActivationMail>

Questions about the Pass Sup' online wallet?

How do I add credit to my Pass Sup' card?

- You can add credit on your online wallet from Internet (laptop, smartphone, digital

tablet...), using your credit card or banking information, and accessing with the login and password you received from IZLY on your student email address: <https://mon-espace.izly.fr>

- only if absolutely necessary, you can add credit by paying with cash at the counter of the university restaurant.

How do I pay for meals at the university restaurants with my Pass Sup' card?

- To pay for meals at the university restaurant, you must first add credit to your online "wallet" on <https://mon-espace.izly.fr> (see the previous question).
- At the university restaurants and cafeterias, you don't have to enter a pin number when you pay. Your card is directly debited by using the rates that apply to you.

What is the minimum credit I can load on my card?

5 €.

How can I get back the money that I put on my Pass Sup' card?

You can get your money back from your online "wallet" by using your login and password on www.izly.fr.

Assistance

My card is lost or has been stolen?

- If you think your Izly card has been lost (or stolen), take steps to block it as quickly as possible
- If your mobile phone has been stolen, change your access code for the Izly application.

- You can take these steps on your personal space on the My Profile page on the Izly website.
- Ask for stopping all different uses than CROUS catering by sending an email to production-cms@univ-nantes.fr giving your first name, last name and birthdate.
- Report the lost or stolen card to the registrar's office where you registered first.
- You will be charged 10 € for a new card.

What can happen if someone else uses my card without my knowledge?

You must immediately block your card to prevent somebody else from using it. Université de Nantes and CROUS will not be held responsible for any misuses of your card.

My card doesn't work at the library, copy machines, to access buildings...

Please inform your registrar's office.

My card doesn't work at the university restaurants nor at the CROUS ATM machines.

Please notify the staff at the counter of your university restaurant.

I'm having trouble with my online "wallet" on the website

<https://mon-espace.izly.fr>

Please notify the staff at the counter of your university restaurant.

STUDENT INTRANET

Access to your intranet with your login and password (→p. 14)

Change your password

by going to your **INTRANET** > **VOS WEBSERVICES** > *Mot de passe*

You have lost your password?

You can reset it by yourself online on: univ-nantes.fr/motdepasse

The university staff can reset your password if you lost it. Feel free to ask them.

Please note that for security reasons, passwords cannot be provided to you by phone or email.

Advice:
Never give out your password.

Join the community
#univnantes



1st university community in France on Twitter and Youtube

The student intranet makes your life easier!

Stay connected...

Your Student e-mail address:

firstname.lastname@etu.univ-nantes.fr

Check it regularly as all the information that concerns your classes and university life will be sent to you at this address.

How to access your student email address?

- By checking your university inbox with the **INTRANET** > **VOS WEBSERVICES** > *Webmail* or your smartphone or another email client (all info is at > wiki.univ-nantes.fr/etudiants)
- By redirecting your student email address towards your personal mailbox (<http://moncompte.univ-nantes.fr> puis «Ma messagerie»)

Other webservices:

- to get in touch (online forum, chat...); store, edit and share files (UNCLOUD)
- to consult your classes (Madoc), your schedules, your grades
- to ensure your success (internship, jobs, advice, etc.) go to your **INTRANET** > *Orientation-Career-Trades* or *the Career Center* (→p. 50/51).

All your online services available on one platform: **INTRANET** > **VOS WEBSERVICES**

UNIVNANTES MOBILE APP

UnivNantes: the mobile app that makes your everyday life easier!

The mobile app UnivNantes offers a range of useful services while on the move:

- check your timetable*
- find your way around campus, find the building you want to go to
- stay up-to-date about last minute changes to your sports activities
- check your book loans and due dates at the University library
- check your University library opening hours in real time
- book a NoctamBU spot (BU Health)
- check the daily menu at the university restaurant
- set up your preferences.

*For all students, except IUT de Nantes, IUT de Saint-Nazaire, INSPE Angers and Le Mans

Download the UnivNantes mobile app to see your time table and enjoy other useful services:

UnivNantes mobile app available on:



► Search for UnivNantes in your Store.



SPECIAL ACADEMIC ARRANGEMENTS

Students with disabilities or long-term illness

To consider the facilities you will need, your first step will be meeting the doctor at the Student Health Center-SUMPPS as soon as possible (Make an appointment online at univ-nantes.contactsante.fr/RendezVous). (→ p. 60).

The doctor will attest of your situation and can recommend arrangements according to your specific needs.

This support is coordinated by the “Relais handicap” of the Student Health Center.

The “Relais handicap” supports your student life (access to course content, housing, sport, culture, study abroad) with its partners (Handisup association, the CROUS, etc.).

univ-nantes.fr/relaishandicap

This website is for students with disabilities, where you can download the form to inform us of your special needs.

Contact:

+33 (0)24037 1035

relais.handicap@univ-nantes.fr

High-level athletes

Université de Nantes offers certain adjustments (laptop loan, tutoring, special timetable arrangements) to allow high-level athletes to combine studies and sports in all academic fields.

Complete the application to get the high-level athlete status available on univ-nantes.fr/sport and return it to the SUAPS or by e-mail to:

Luc PILLLOT*
luc.pillot@univ-nantes.fr

Your academic advisor, your high-level athlete advisor or Luc Pillot can advise you on the use of the specific academic arrangements. Don't forget to contact them.

Learn more about the special academic arrangements:

univ-nantes.fr/shn

* Olympic sailing champion
at the 1988 Seoul Olympic Games

These arrangements will allow students to achieve these two goals:

- graduate within a specified time
- perform their sports at the highest level.

The high-level athlete student status is embedded on your Pass Sup' student ID chip, allowing access to the weight room sports facilities.



CULTURE



Cultural classes and workshops

The University artistic and cultural workshops allow you to discover a new artistic activity in a friendly atmosphere.

They are open to everyone, without prerequisites nor extra fees.

Areas:

- writing, editing, poetry
- image, cinema
- Graphic design, graffiti
- Acting, dancing, singing.

Contact:

ateliers-culture@univ-nantes.fr

Information on:

univ-nantes.fr/culture

Culture: Pursue your interests!

Are you interested in participating in a regular cultural activity?

The weekly workshop is made for you.

Do you want to take part in cultural activities outside of school hours?

Choose the weekend courses.

Would you like to be part of campus highlights?

Participate in artistic creations alongside invited artists to discover contemporary art, live a friendly experience... and re-enchant your everyday life.

Experiment

Discover original artistic events, all year long, at the Pôle étudiant, at the University Theater, in libraries and in unexpected places. Check the programme in the Université de Nantes Agenda available online.



O.S.E.R Turbulences 2019

CULTURE



September Cultural calendar

Artistic training, workshop registration.

Come to try, discover and join!

Workshop registration dates at:

univ-nantes.fr/culture

The Big College Trombinoscope

Come and have your photograph taken and get a quirky, poetic or customised portrait done by us!

Get involved

- **Participate in cultural workshops** with artists and get involved in student associations on campus.
- **Participate in the Turbulences Festival:** every year at the beginning of April, students' art creations are represented on the Tertre campus. Whether you are an artist or an spectator, you can participate in this festival co-organized by the TU-Nantes University Theater and the CROUS Nantes Pays de la Loire, Beaux-Arts Nantes Saint-Nazaire and Le Pont Supérieur.
- **Show off your talent as a photographer or picture-maker** at the Temps d'Exposition.
- **Contribute to the blog "Culture and you"** to give your opinion about culture at the University.

Invent

- We welcome your initiatives and projects!
- The university is happy to provide support.

Contact:

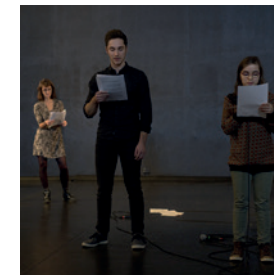
culture@univ-nantes.fr

Information on:

univ-nantes.fr/culture



Fresco workshop



Theatre workshop



Web and alternative radio workshop

SPORT ACTIVITIES

The university service for physical education offers sports classes and personal training to fit into your academic schedule.

You can take part in university sporting competitions.

Download the **UnivNantes app** to have access to the latest information regarding your sports activities. (→ p. 19).

You can view the sports catalogue online on your **INTRANET > YOUR WEBSERVICES > Inscription au sport**



Sign up for sport activities

As part of your academic program...

Sports activities can be an integral part of your academic career or they can be complementary to your academic schedule. You may choose from a variety of levels and times. Activities take place on different sites of the university.

For leisure...

A wide variety of activities: water sports, well-being activities, dance, team sports, racket sports, combat sports, sailing and gliding, and also climbing, mountain bike, circus, gymnastic, hiking, surf...



Please note:

For more information about the **registration process**, please refer to www.univ-nantes.fr/sport

- **Pre-registration** on your student Intranet, starting from September 2020.
- **Start of activities and registration** confirmation from September 7th 2020.
- **the "OPEN" Week** (a week to discover all activities) from September 14th until 18th (included).

Flyers will be available at the SUAPS, located at 3, boulevard Guy Mollet in Nantes (→ [map p. 90 n° 15](#)).

SPORT ACTIVITIES

Support Université de Nantes in university competitions

Teams are formed to represent the university at all levels of competition, whether it be local, academic, national, international, and depending on your level, your desires and your availability.

Join the university teams with the sports association of Université de Nantes (ASUN).

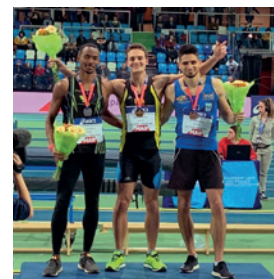
Ask for your university sport licence when registering at SUAPS.

High-level sports

A special system is reserved for high-level athletes registered with the Ministry of Youth and Sports in elite, senior, junior, in certified training centers, or in professional clubs. (→ p. 19).

Special arrangements are also provided for students enrolled in university sports sections (SSU) or who play on national teams.

For more information on sports activities at the university: univ-nantes.fr/sport



Lorenzo Ricque, 2020 FFA champion for the men's 400m indoor event



The Université de Nantes sailing came second in the 2020 French championships

[STUDY]



28 ACADEMICS

30 DIPLOMAS

32 EXAMS

34 KEY DATES

ACADEMICS

Université de Nantes offers academic paths leading to most degrees in higher education, in short or long study programs.

The LMD system

As part of the harmonization of European higher education, the university study programs are organized around three degrees:

- Licence (Undergraduate degree)
- Master (M)
- Doctorate (D).

The admission in Master's degrees is selective.

Do not forget to apply on: univ-nantes.fr/candidature-master



Université de Nantes is a major research centre in Western France. 43 laboratories work in all areas.

Classes are taught by professors who include the latest research achievements in their teaching.

LMD system: Licence, Master, Doctorate

The advantages of this system include:

- recognition and equivalence Europe-wide
- student mobility
- better recognition of the degrees on the labour market
- the intermediate degrees DEUG, DUT (bac +2) and Maîtrise (bac +4) continue to be issued.

Organization of studies

Semester system

- The licence is divided into 6 semesters
- The master is organized in 4 semesters

Credits can be accumulated and transferred

Each semester is assigned 30 credits or ECTS (European Credit Transfer System), common to many European countries:

- licence, 6 semesters validated = 180 credits
 - master, 4 semesters validated = 300 credits
- Holders of a master can prepare a doctoral thesis which corresponds to 480 credits, or 180 additional credits after the master.

ACADEMICS

How do I contact a teacher?

Go to the secretariat of your faculty, UFR, institute or school (or department) to get your teacher's contact details or office hours. Consult the directory on the mobile app: m.univ-nantes.fr or on the home page of the university website.

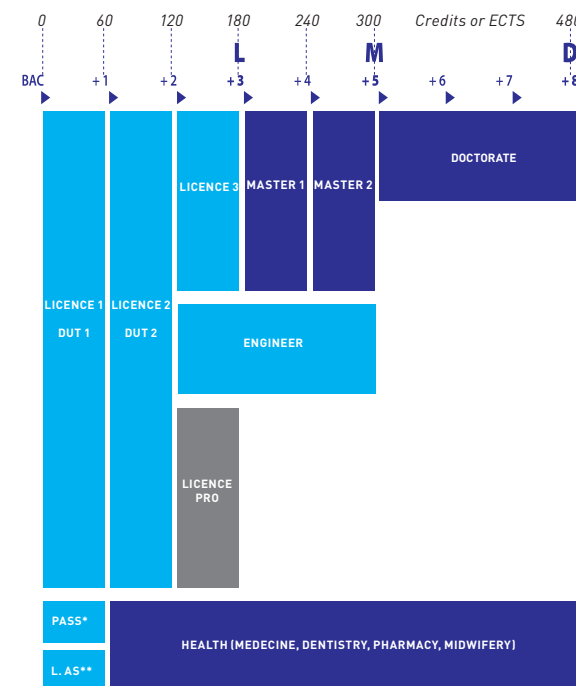
If you want to change programs during your first year of Licence:

- in September for all L1 students
- you can do so at the end of the first semester. Check with the Registration Office of your Faculty, Institute or School where you want to enrol.
- find the UFR contact information on univ-nantes.fr/scolarites/demarches > Vous changez d'orientation.

Course Unit system (Unités d'Enseignement - UE)

The system consists of course units. Each UE has a value defined in ECTS credits and corresponds to the number of hours of study (lectures, tutorials, practical work, personal projects) that the student must complete to obtain a UE. A full year represents 60 credits or 30 credits per semester.

Diplomas



* PASS: Parcours d'accès spécifiques aux parcours de santé/Health Studies Admission Course

** L.AS: Licence accès santé/Licence with Health Studies Admission

DIPLOMAS

A government-sanctioned diploma and teaching backed-up by research.

Health Studies

The first year of health studies (PASS) consists of core classes that prepare students to take the entrance exams to the schools of medicine, pharmacy, dentistry and midwifery. The curriculum is common to the 4 branches, with specific classes in the second semester.

Université de Nantes has three health studies programs: dentistry, pharmacy, medicine and medical technology (orthoptics, speech pathology and midwifery), taught in three schools in Nantes:

- Medicine and Medical Technology
- Dentistry
- Pharmaceutical and Biological Sciences.



Tutorials in Pharmacy

baccalaureate + 2 years DUT

The University Diploma of Technology (DUT) is a 2-year degree program. The DUT trains students to work as senior technicians in all fields, for immediate entry to the workplace.

To pursue an advanced degree after the DUT (general licence, professional licence or engineering school) students must submit an application or have their experiential learning validated before being admitted.
univ-nantes.fr/dut

baccalaureate + 3 years Licence

The Licence (Undergraduate degree) is a 3-year program. At the end of the second year, several choices are available: a general licence, professional licence or engineering school.

The **general licence** can lead to further studies in a Master program or the competitive exams for civil service.

The **professional licence**, developed in partnership with businesses, prepares students for immediate entry into the workplace in fields that require specialized skills. It does not lead to further studies towards a Master.

univ-nantes.fr/licence

DIPLOMAS

If you want to study physiotherapy in Nantes*, you have two possibilities:

- to pass a competitive exam at the end of the PASS (60 spots)
- to study physiotherapy at the STAPS for the first year (up to to 100 students, only the first 32 students in rank are selected at the end of the year)

**Institut de formation en masso-kinésithérapie of Saint-Sébastien-sur-Loire offers 92 spots allocated by the regional council of Pays de la Loire.*

<https://www.ifm3r.fr>



Graduation ceremony

baccalaureate + 5 years Master

The Master is a 2-year program. During the first year (Master 1) students begin a specialization. In the second year (Master 2), students can choose a "professional" path for immediate entry in the labor market or a "research" path for pursuing doctoral studies. Many Master 2 programs require an internship of 4 to 6 months (at a business or research organization).

univ-nantes.fr/master

baccalaureate + 5 years Engineering degree

Université de Nantes has an engineering school: Polytech Nantes. There are several possible entry levels: general or technology baccalaureate for the preparatory cycle (in partnership with the faculty of Sciences and techniques as well as the IUT in Nantes and La Roche-sur-Yon), two-year diplomas (such as L2 or DUT) or four-year degrees (Master 1).

polytech.univ-nantes.fr

baccalaureate + 8 years Doctorate

The Doctorate is open to holders of a Master degree. This degree is awarded after defending a thesis, written under the supervision and responsibility of a thesis director. The thesis is usually done in three years. The Doctorate leads to careers in research and development in the private sector but also careers as professors or researchers in public institutions (universities, CNRS...).

univ-nantes.fr/ecoledoctorales

EXAMS

Exam schedule

Exam notifications will be posted in the hall of your faculty.

For the IUT, there are no exam sessions, only continuous assessment.

The School of Engineering, Polytech, has specific study regulations.

Testing

For each course unit (UE) you will be tested:

- either by continuous assessment
- or by one or more final exams
- or by a combination of the two.

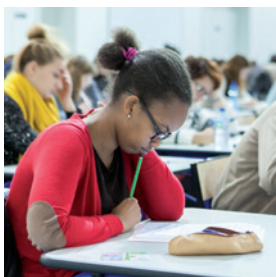
The day of the exam

- Do not forget to check your **INTRANET > VOS WEBSERVICES > Examens/notes** and/or the **bulletin board** for the dates and location of your exams
- **Show up 30 minutes before** your exam starts
- Pay careful **attention to the location of your exam**
- **Do not forget your identification card** AND your student card with the vignette certifying that you have registered (→ p. 14).

Exam sites

Your exams may take place:

- on your campus
- at the SUAPS (→ map p. 90 n° 15)
- at the stadium Pierre Quinon (→ map p. 90)
- in the Beaujoire for the PASS (Health studies admission course).



Exams

EXAMS

To contact your Registrar's Office:

INTRANET > SCOLARITÉ, INSCRIPTION, CALENDRIER

Succeeding in your UE, Semester, Year

Each academic field has its own grading requirements. Please see your registrar's office for more information.

Earn Sports Points

Each semester, in some faculties, schools or institutes, points can be earned through sports classes. For questions, contact the secretariat of your Faculty, institute or school.

Passing into the next year

L1 → L2 if at least one semester is validated

L2 → L3 If both semesters of L1 are validated + 1 semester of L2

L3 → M1 Only if all semesters of the three years of Licence are validated and you have earned your Licence degree

M1 → M2 Only if the M1 is fully validated
Grade repetition subject to approval



Health Library

KEYS DATES

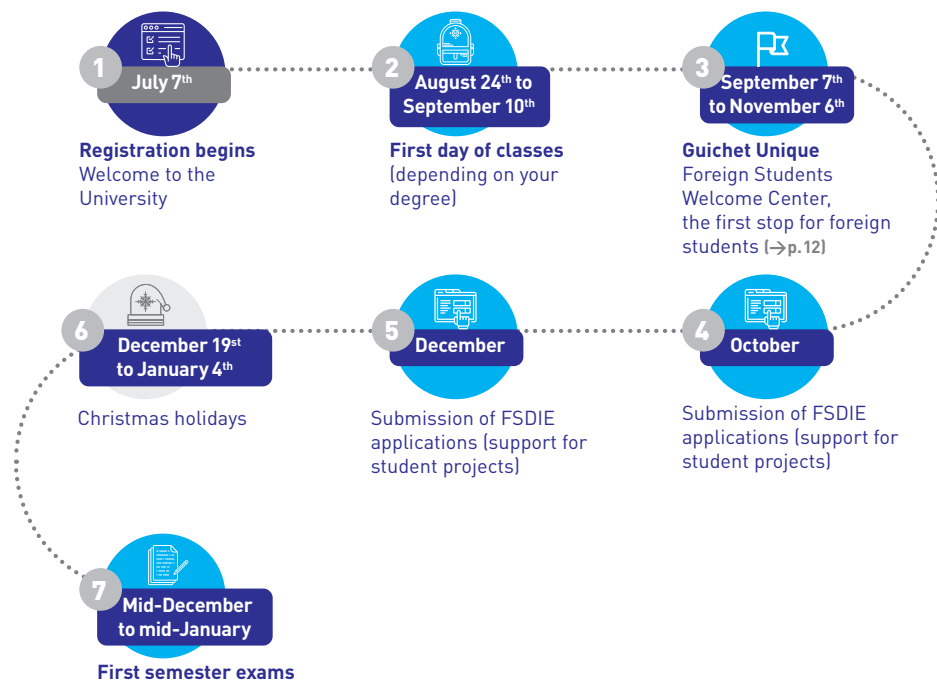


Check the **university calendar** of your UFR, institute or school on: univ-nantes.fr/calendrier

For all information regarding your courses, please visit your faculty, UFR, institute or school website.

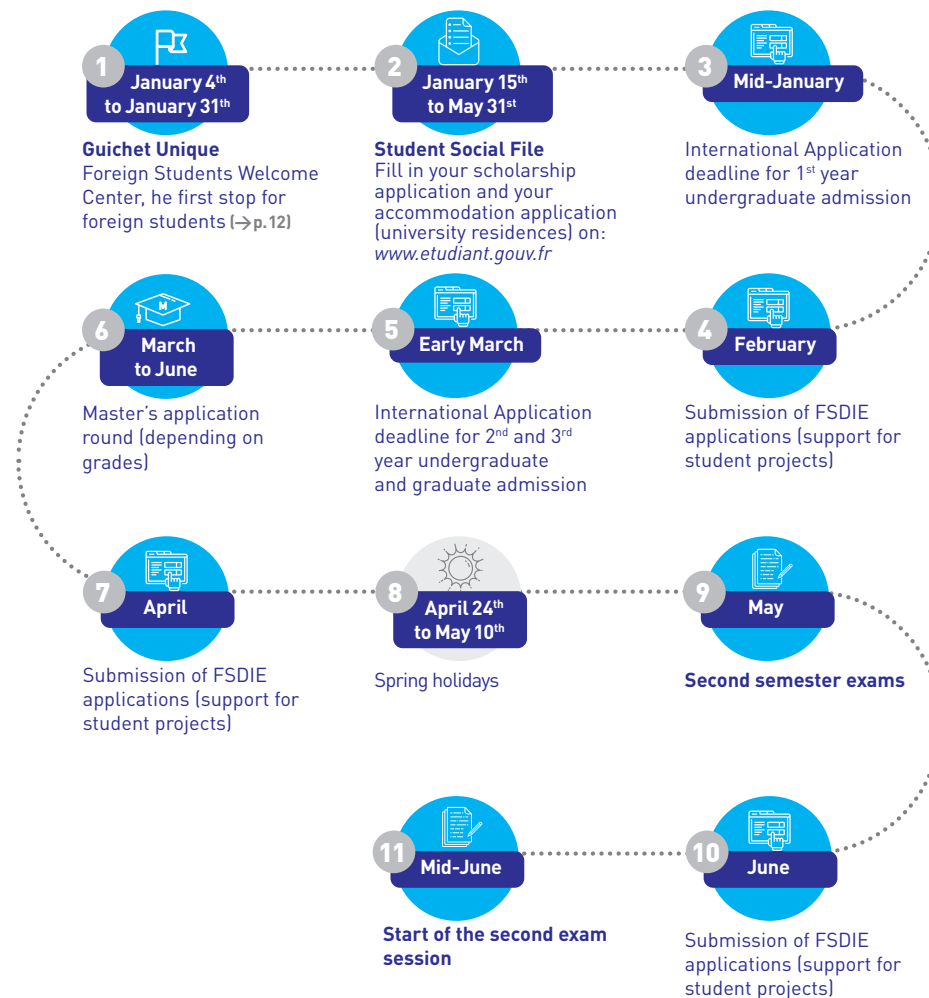
Events calendar for all the campuses is available on: univ-nantes.fr/agenda

Semester 1



KEYS DATES

Semester 2

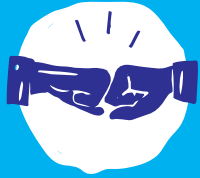




[SUCCEED]

- 38** 10 KEY TIPS
- 40** MAKING A SUCCESS OF YOUR FIRST YEAR
- 42** UNIVERSITY LIBRARY
- 44** BROADENNING YOUR KNOWLEDGE
- 46** CERTIFICATIONS
- 49** LANGUAGE COURSES
- 50** WORKING TOWARDS YOUR CAREER GOALS
- 52** STUDENT ENTREPRENEURSHIP

10 KEY TIPS FOR A SUCCESSFUL ACADEMIC YEAR



1 ▶ Confidence

Higher education is the logical continuation of high school. You will have to get used to being more independent and that's a big change. So be confident in your abilities, but make sure you stay organized.



2 ▶ Organization

Plan your study time, set yourself goals with specific deadlines and stick to them. We offer classes on study skills (→ p. 40), make sure you attend.



3 ▶ Dedication

Don't skip classes. Successful students attend all their classes. Remember that every hour in class requires one hour of homework to review your notes and do further research.



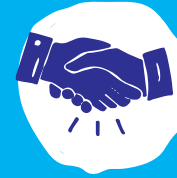
4 ▶ Motivation

90 % of successful students have chosen a field of study they are interested in. This gives them the energy and motivation to successfully overcome the difficulties.



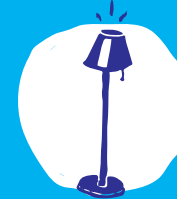
5 ▶ Diligence

There are countless useful resources you can use to learn more about various subjects (→ p. 42 to 45). Using these resources to learn better and smarter is often what makes the difference between good students and the best students.



6 ▶ Support network

Loneliness is common among students, especially at first. Try to form small working groups; you can encourage each other and your grades will improve.



7 ▶ Reflexes

If you have any doubts, questions, problems, seek help. Knowledgeable people can help, please don't hesitate to contact them (→ p. 40).



8 ▶ Sociability

A good way to meet people and make friends is to get involved in a club or association. Contact the Student Life Office (→ p. 80) who will refer you to the many opportunities on campus.



9 ▶ Time off

Get outside, have some fun, get some exercise or attend a cultural event. This is also a good way to meet new people.



10 ▶ Perspective

Take time to think about your future, try to figure out your real motivations and your interest in your chosen field of study. The SUIO is here to help you identify your career goals and tailor your study program (→ pp. 50-51).

MAKING A SUCCESS OF YOUR FIRST YEAR

Université de Nantes has developed a number of systems to help you succeed in your studies.

univ-nantes.fr/reussirsalience

New student orientation

Mentors: during registration, you are greeted by student mentors who help you discover the university, help you with the registration process and answer any questions you may have.

Welcome Week

During the first week of classes, your teachers will hold meetings where they will explain what you need to know about your schedule, the subjects taught, testing and grades. You will also have the opportunity to tour the university.

Your Academic advisor

Your academic advisor assists you throughout your first year at the university. Academic advisors will answer your questions and provide advice on facilitating the transition between high school and college.

University study skills

During the 1st semester the university offers courses to help you learn the study skills specific to your degree program. Note taking, time management, documentary research, group work, critical data analysis, writing a paper and oral presentation. You will also visit the university library during the class.

Changing tracks after the first semester of the first year of Licence

In November of your first year, you can request to switch to a different field of study either at Université de Nantes or in another higher education institution.



UNIVERSITY LIBRARY

University Library: a tool to help you succeed

Opening times

During the academic year the University Libraries (BU) are open:

- from 8.30am to 7pm from Monday to Friday
- from 8.30am to 1pm on Saturday
- from mid-October to mid-May, the Library of the Faculty of Medicine is open on Saturdays from 8.30am to 6pm

Opening hours during university breaks

Depending on the sites, the libraries close one week at Christmas and 2 weeks in August.

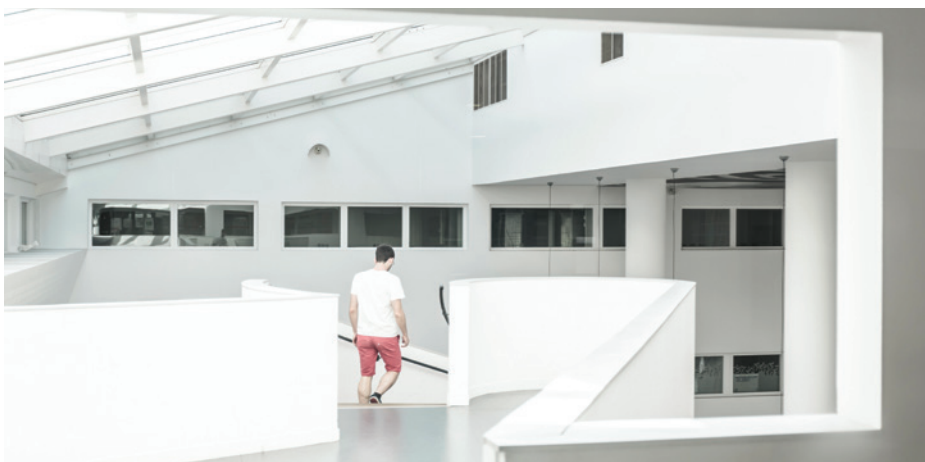
The university library will help you during your studies!

With seven locations in Nantes, Saint-Nazaire and La Roche-sur-Yon (→ maps p.87 à 94), the university library offers you **multidisciplinary documentary collections**, on divers supports, for courses, research, information and leisure.

The printed and digital collections are indexed in a **unique catalog, Nantilus**: nantilus.univ-nantes.fr.

You will find encyclopaedias, books, thesis, e-books, scientific journals, French and international newspapers, and search databases in all academic fields, but also novels, comic books and DVD.

Good to know: Consult the BU's digital resources from anywhere in the world using Nomade. To find out more about remote access in Nantilus.



Health Library

UNIVERSITY LIBRARY

NoctamBU

From September to Mid-June, 400 spots are offered on expanded evening hours until 11:30 pm and on weekends at the library of the Faculty of Medicine (city centre), (→ map p. 88 n° 4).

Reservation required on: noctambu.univ-nantes.fr or even better from your mobile app

The BU on the Univnantes mobile app

The mobile app will allow you:

- check your loans,
- manage your schedules
- sign up for NoctamBU.

The library also offers many services:

- borrowing of documents and interlibrary loan of documents found in other libraries.
- on Nantilus: loan extensions, suggested buys, inter-library loan requests, document reservations...
- individual study spots and working rooms for groups in all university libraries
- loan of laptops on site, computer rooms, WIFI
- printing, copying and scanning available with student card
- document research training and workshops proposed by librarians
- PhD students support for dissemination and publication of their work
- exhibitions and various cultural events (conferences, readings, workshops...)
- services and support for people with disabilities.



Library of Saint-Nazaire

Find more information about the BU on:

bu.univ-nantes.fr

twitter.com/univnantesbu

BOARDENING YOUR KNOWLEDGE

WebTv, YouTube: knowledge comes to you

Short and original formats to understand Research in a different way

- "Digression", "one question one researcher", "Looking for innovation"...

Full lectures to understand societal topics and the news.

- Boris Cyrulnik, Edgar Morin, Tobie Nathan, Étienne Klein and Pierre Rosanvallon.

UNNEWS: do not miss anything from UN news!

Scientific discoveries, athletes performances, last pedagogical innovation... stay informed about your university current affairs on UNNEWS, Université de Nantes online magazine!

The "Labo des savoirs"

Every week, volunteer journalists from the "Labo des Savoirs" (Lab of Knowledge) meet researchers and highlight Research through interviews and scientific reports.

Prun': your campus radio

The student radio station Prun' runs shows every day featuring all styles of music as well as programmes on a variety of other topics (politics, science, culture and more).



youtube.fr/univnantes

The Université de Nantes is the 1st French University on Youtube



plus.franceculture.fr/partenaires/nantes

France Culture webmedia



unnews.univ-nantes.fr



www.labodessavoirs.fr



www.prun.net
92 fm

BOARDENING YOUR KNOWLEDGE

UP! For all inquisitive minds

The Permanent University (UP) is a Université de Nantes service aimed at everyone regardless of age or academic achievement. It offers more than 400 courses and 300 conferences in a wide variety of fields, including:

- letters and humanities
- history and history of art
- world studies and society
- sciences and innovations
- computers and IT
- languages
- artistic practices

The UP does not award degrees, its courses are for anyone who is curious and enjoys learning.

Find out what courses and conferences are available and get useful information:

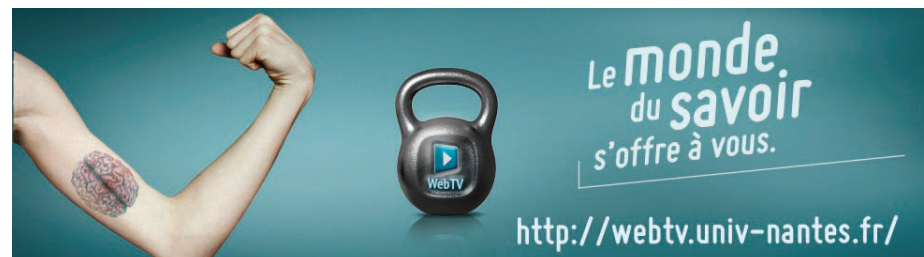
Contact

univ-perm@univ-nantes.fr

up.univ-nantes.fr

To get the agenda, send an email with no subject heading nor message:

universite-permanente-subscribe@etu.univ-nantes.fr



CERTIFICATIONS

Université de Nantes offers students the opportunity to certify their computer and language skills.



Digital Skills Certificate

Pix:
Prepare your digital skills certificate!

Pix is a public online platform project for **digital skills assessment** and **certification**. The University proposes this new certification.

The Pix certification

Pix will allow you to certify your command of several digital skills necessary to: complete successfully your studies, begin your professional life, your personal life... etc. It relies on the European Digital Competence Framework for Citizens (DIGCOMP).

The digital skills certified by Pix are divided in 5 areas:

- Information and data
- Communication and Cooperation
- Content creation
- Protection and safety
- Digital environment

CERTIFICATIONS

A certification incorporated in the study programmes

Many of our university programmes (licence and DUT) include training courses in **digital literacy and skills** (CCN : culture et compétences numériques) that will lead you to pass the PIX certification.

Registration for this credential is automatically done when you register for your semester exams.

For other cases, please refer to "**CCN open path**".

- **The C2i certificates (level 2)** are designed for professional use of digital tools in a specific discipline or field of study. They are intended for master's students in the Education, Legal or Health departments.



How to get ready for the Pix certification?

Step 1: self-assessment

Create a personal account on <https://pix.fr>

Determine your skills profile through online activities.

Step 2: Training

Face-to-face or online, you have access to resources on Madoc, self-registration from your **INTRANET > VOS WEBSERVICES > Madoc**

Step 3: Evaluate your progress

Repeat activities about Pix and improve your skills profile.

Then, the certification is based on this skills profile.

Information and registration

univ-nantes.fr/pix
pix@univ-nantes.fr

CERTIFICATIONS

The Language Center of Université de Nantes advises and guides you throughout your language certification.

The Language Center welcomes you:

Bât. Nouveau Tertre - Grand Hall
Chemin la Censive du Tertre
BP 81227

44312 NANTES CEDEX 3
Tram line 2. Stop: Facultés
(→ map p. 90 n° 3)

servicelanguages@univ-nantes.fr

When and how to take an assessment exam to receive a certificate of proficiency in a language?

Whenever you feel ready. To assess your language skills, to study abroad with an exchange program or for your résumé.



Certification in other languages

Your proficiency in a foreign language can be attested by an assessment exam that will test your oral and/or written language skills. Certification is available in **German, English, French, Chinese, Spanish, Italian and Portuguese** (subject to the number of applicants).

Certification is a requirement for some Master and Licence programs.

It is highly valued in terms of international mobility and is an asset to your employability.

For further information:
pratiquerleslangues.univ-nantes.fr

French Language Certificates and Tests

The Language Center organizes 2 official French language certifications recognized by the French Ministry of Education:

- The DELF (Diplôme d'études en langue française) and the DALF (Diplôme approfondi de langue française).
- The TCF (Test de connaissance du français) and the DAP-TCF (required for first year undergraduate admission).

For further information:
i-fle.univ-nantes.fr/french-courses

LANGUAGE COURSES

University Language Learning Centre

Come visit the Language Resource Center at the University Language Learning Centre and take advantage of personalized advice to support you in your foreign languages learning process.

Upon request, benefit from online tools to improve your languages skills and to make a self-assessment.

More information and registration:
sul-crl@univ-nantes.fr

Campus Soir – Campus Été Foreign Languages Classes

Diverse training programs to learn and practise foreign languages are organized by the Language Center. You plan to study abroad? You want to learn or improve your language skills? You are preparing a language certification?

Université de Nantes organises diverse complementary language programs:

- Refresher Courses/Advanced Courses
- Conversation workshops
- Certification Preparation
- Less Commonly Taught Languages Initiation
- Mobility Preparation

Registration is required and takes place each semester in September, December and March (courses are open subject to the number of applicants)

More information and registration:
sul-campus@univ-nantes.fr
pratiquerleslangues.univ-nantes.fr



WORKING TOWARDS YOUR CAREER GOALS

Throughout your academic career, get ready for your professional future

SUIO Welcome desk - University Service for Information and Career Orientation

Monday through Friday
from 8:30 am to 5:30 pm

Maison des services universitaires
110 boulevard Michelet in Nantes
+33 (0)2 40 37 10 00
(→ map p. 91 n° 35)

Tram line 2 – Stop Michelet or Morrhonnière
univ-nantes.fr/suio

The Documentary resources center is open

From Monday afternoon to Friday:
9:30 am to 12:30 pm
1:30 pm to 5:30 pm
Closed at 4.30 pm on Fridays



Maison des services universitaires

An available team, some personal advice, and some collective workshops to:

- Get career guidance
- Meet professionals, and learn how to convince them
- Find an internship, a job
- Learn how to write your resume and cover letter
- Prepare for an interview.

More information on: univ-nantes.fr/suio

Online services on your intranet and the Career Center:

- Personalized access
- Jobs videos
- Advice
- Events: workshops, fairs
- Internship and job offers
- Information about companies

All informations on your
INTRANET > Orientation-Parcours-Métiers

Registration:
univ-nantes.fr/careercenter

WORKING TOWARDS YOUR CAREER GOALS

All year long, our advisors guide you at each step of your career

Building your educational curriculum

- Succeed in your academic reorientation (starting from October)
- Be accepted in some selectives programmes (February to April)
- Continuing your work-linked training (March to April)

Meeting professionals

- Student jobs: workshops and fair (September)
- Find an internship (October to December)
- Summer jobs: workshops and fairs (April)

Getting your first job

- JD Coaching
- Joining the Alumni network: univ-nantes.fr/alumni



JD Coaching

STUDENT ENTREPRENEURSHIP

MISSION

ENTREPREURIAT

Do you have an idea or a project and are looking for more information on student entrepreneurship?

Contact us at:
entrepreneuriat@univ-nantes.fr

More news regarding entrepreneurship can be found

- on the Facebook page @ [missionEntrepreneuriat](#)
- Sign up to our entrepreneurship newsletter at: www.univ-nantes.fr/infolettre-entrepreneuriat

Become a student entrepreneur!

Are you looking to create or take over a business?

Thanks to the National Student-Entrepreneur Status (SNEE), the university allows you to combine your studies with project creation activities, whatever your curriculum, your study level and your areas of interests are.

Advantages:

- being officially recognised as a student AND as an entrepreneur
- benefiting from adapted schedules
- replaces your end-of-program internship
- benefiting from the university's coworking areas
- gaining access to support programs with the PEPITE (student centre for innovation, transfer and entrepreneurship) label, and benefiting from personalised support
- being placed in contact with local socio-economic stakeholders.



Innovation Campus Day at Saint-Nazaire



STUDENT ENTREPRENEURSHIP



Fringale - Antoine Devins, Agronaute urban farm

Events for learning more, finding inspiration and getting started (open to all students)

Take part in the Fringale! inspirational lunches held throughout the year (1 entrepreneur, 1 topic, 1 lunch > free sandwich). In November, learn more about creating innovative projects at the Innovation Campus Day, our 2-day multidisciplinary marathon. Another highlight on the calendar is entrepreneurship month which takes place in March with the student entrepreneur pitch competition!

For information, testimonials by student entrepreneurs and news, visit your INTRANET > Entrepreneurship while studying

"For me, entrepreneurship means forging my own path while listening to those around me. It involves learning from my mistakes, making decisions and choices, assuming responsibilities and being proud of the results and successes. Entrepreneurship is all about daring to have self-confidence."



Jad Tarsissi, creator of Room (mobile app) – student in his second year of a master's degree in sport and exercise science

[BUDGET]



56 STUDENT BUDGET

STUDENT BUDGET

Tuition fees*

- DUT, licence, licence pro → 170 €
- Master → 243 €
- Ingénieur → 601 €
- Doctorate → 380 €

Student and Campus Life Contribution

to be paid to CVEC on cvec.etudiant.gouv.fr
→ 91 €*

Complementary Health Insurance

→ 85 € to 40 €

Housing (1st month + 1 month deposit)

- Cité U' Crous (♻️)
→ 1st month: 340 € to 738 €
→ Following months: 165 € to 378 €
- Résidence U' Crous (♻️)
(T1 / T1 bis / T2)
→ 1st month: 447 € to 985 €
→ Following months: 261 € to 556 €
- Logement privé (moyenne)
→ 1st month: 1000 €
→ Following months: 500 €

Housing insurance

→ 40 € to 65 €/a year

* The amount of the CVEC in 2020 has not yet been communicated. It is expected to be the same or very close to the 2019 figure, which was 91 €

University cafeteria

Full meal from €3.30
→ +/- 135 € per month
From Monday to Friday

Public Transports

- Pass TAN of Nantes
→ 28 €/month during 10 months
- Impulsyon of La Roche-sur-Yon
→ 17 €/month during 7 months
+ 15,40 € during 1 month + 4 free months
(140 € for the 12 months)
- STRAN of Saint-Nazaire
→ 23 €/month during 10 months,
230 € for a year (2 free months)

Groceries

→ 1st month: +/- 200 €
→ Following months: +/- 200 €

OFII tax

Visa validation - residence permit
(Except for specific situation, contact the
International Office) (→ p. 13)

- 60 €
- 49 €
- 79 €

STUDENT BUDGET

Meals and accommodation

CROUS housing and scholarships:
crous-nantes.fr

All CROUS housing gives right to the CAF (Caisse d'Allocations Familiales) housing allowance.

Housing allowance (APL): caf.fr

Find more information → p. 65 and on:

univ-nantes.fr/welcome-toolbox > Meals
univ-nantes.fr/elcome-toolbox > Find accommodation

Summer jobs and seasonal jobs

Are you looking for a job to finance your studies or your holidays? Université de Nantes will help you in your job search and even offers some jobs on campus.
univ-nantes.fr/careercenter (→ p. 50/51)

You can also take a look at the CROUS website:
jobaviz.fr

Be careful!

If you are a non-European student, you need to have a valid residence permit authorizing you to work. Foreign students are allowed to work up to 20 hours per week (60% of the legal work time in France).



Are you struggling with unexpected expenses or a lack of resources? Do you have difficulty balancing your budget?

Social workers at Student Health Center-SUMPPS (→ p. 60) can help you get through difficult times by giving you information about the help you can seek (grants, loans, budget...) and your rights regarding housing, social protection... and all other aspects of daily life.

More information on univ-nantes.fr/welcome-toolbox > TAKE CARE

Social Pricing for Transport Pass

In Nantes and Saint-Nazaire, you can get up to 50% discount or a free transport pass depending on your incomes. All information on: www.tan.fr (for Nantes) or www.stran.fr (for Saint-Nazaire).

Working within the University

Your University also offers some student jobs.

On the University website:

> [Travailler à l'université](#) > [Recrutement étudiant](#)

[TAKE CARE]



60 STUDENT HEALTH CENTER

62 UNIVERSAL HEALTH CARE (SÉCURITÉ SOCIALE)
AND STUDENT COMPLEMENTARY
INSURANCE

STUDENT HEALTH CENTER

Student Health Center (SUMPPS)

Maison des services universitaires
110 bd Michelet à Nantes
(→ map p. 91 n° 35)
Tram line 2. Stop:
Morrhonnière or Michelet
accueil.sumpps@univ-nantes.fr
+33 (0)2 40 37 10 50
or +33 (0)2 40 37 10 69.

And also on-site nursing services at :

- La Fleuriaye
- La Roche-sur-Yon
- IUT de Saint-Nazaire.

More information on your toolbox: univ-nantes.fr/welcome-toolbox > TAKE CARE



Students "Relais Santé" (for Health Prevention)

- If you have a **health condition**,
- If your **primary physician is far away**,
- Or if you're having a **difficult time adjusting**, you **may need to speak to somebody**.

Please contact the student health center.

Medical Services at your service

Nursing

Preventive visit • care • emergency contraception • pregnancy test • vaccination • smoking cessation • well-being workshop • cooking and nutrition workshop • first-aid training session • supporting and counseling services.

General Practitioner

Consultation by appointment only. To make an appointment only visit: univ-nantes.contactsante.fr

Create your account using your student email address.

Psychological service

Consultations by appointment by phone or at the SUMPPS.

Dental healthcare appointments

Appointments must be made online:
univ-nantes.contactsante.fr

Social service

Depending on your UFR, faculty, please take an appointment at the Student Health Center (+33 (0)240371099) or at the CROUS (+33 (0)240371339).

You can find your social service contact on the INTRANET > **SANTÉ SOCIAL** > *Service social*.

Disabilities

You can make an appointment with a doctor and ask for arrangements of your exams or academic program.

Please contact the "Relais Handicap" (→ p.20).

STUDENT HEALTH CENTER

Preventive Medical Visit

Don't forget to attend your preventive medical visit **during your 1st year at the university**.

For students registered in medical studies, the preventive visit has to be done during the 2nd year of studies.

Online registration on:
univ-nantes.contactsante.fr

You must create your personal account beforehand using your student email address (@etu.univ-nantes.fr), and then you will have access to the schedule.

Schedules are published online monthly so you can choose your appointment at the Student Health Center for this checkup visit.

Oral healthcare diagnostic

Some dentistry interns offer an oral diagnostic (Online appointments)

Doctor's appointment - First stop - General practice, Gynecology, and Nutrition

Open to all students but priority is given to:

- students with financial problems
- students without a primary physician
- foreign students

Documents you MUST bring to the appointment:

- your proof of universal health coverage ("sécurité sociale")*

AND

- your proof of supplementary insurance ("mutuelle") if you have one
- your student card.

*For European Union citizens, please bring your European health insurance card.



Maison des services universitaires

If you have a supplementary insurance, you will not have to pay:

the Student Health Center will be reimbursed by your Student Health Care Coverage and supplementary insurance.

If you do not have a supplementary insurance,

you will pay the "ticket modérateur", which is the non-covered part of the cost of your medical expenses, and you will have to pay with credit card or check.

UNIVERSAL HEALTH CARE (SÉCURITÉ SOCIALE) AND STUDENT COMPLEMENTARY INSURANCE

Student Complementary Insurance, what is it for?

The Student Complementary Insurance covers the expenses that are not reimbursed by the Universal Healthcare System.

Subscribing to a complementary health insurance is not mandatory, but highly recommended if you wish to be reimbursed at 100%.

More info and insurance comparator on <http://mutuelle.fr/infos/etudiant/>

Universal Healthcare System (Sécurité Sociale)

As an international student, you can benefit from the French Universal Healthcare System free of charge, **no matter what type of visa you have: VLS-T ou VLS-TS.**

You must register online in order to have access to Healthcare services as well as reimbursements of your health expenses. **This procedure is mandatory and must be carried after arrival in France, once you have:**

- Paid the CVEC Student life and campus contribution fee (91€) on: www.messervices.etudiant.gouv.fr
- Registered at the University.

Affiliation for international students is mandatory, regardless of age. It cannot be replaced by a private insurance.

To sign up please visit: etudiant-etranger.ameli.fr

If you are an **EU Citizen**, you must bring your European Health Insurance Card.

This card replaces your affiliation to the universal healthcare system provided by the French Social Security. Its validity dates shall cover your entire stay.

Whatever your situation, your health coverage is valid all along the academic year.

All informations on:

english.univ-nantes.fr > Student life > healthcare



[MEALS AND FIND ACCOMMODATION]



- 66 GOOD DEALS FOR EATING OUT OR MAKING YOUR OWN MEALS
- 67 FIND ACCOMMODATION



GOOD DEALS FOR EATING OUT OR MAKING YOUR OWN MEALS

Solidarity circuits

- Associations pour le Maintien d'une Agriculture Paysanne (AMAP).
AMAPs promote sustainable and organic farming by creating a direct link between local producers and consumers. <https://www.amap44.org>
- Épiceries Solidaires
- Markets

Bulk grocery shops

There are also many bulk grocery shops that help cut down on waste and packaging such as plastics, paper bags, and cans.

- Chez la Voisine
- Day by Day
- Ô Bocal
- Dose de Sens
- Colegram (Rezé)

University dining halls

This is the best value for your money: €3.30 per meal (includes a starter, main course and dessert).

Academic facilities also offer places to eat, with a variety of quick options that can be paid for with vouchers or cash.

To pay for meals at university dining halls (RUs), you must credit your Pass Sup' card account. How does that work? (See → p. 16)

To learn more about RUs and other dining facilities (access, opening hours) visit the CROUS website www.crous.fr.

Most RUs are closed weekends and holidays.

Learn how to cook

The university's Student Health Centre (SUMPPS) (→ p. 60) organises cooking and nutrition workshops in collaboration with the association Du Pain sur la Planche.

Whether you're a budding gourmet or just curious, take part in these cooking and nutrition workshops organised for you on your campus!

Treat yourself

Looking to treat yourself? The website Les Tables de Nantes can help you to easily find a restaurant based on your tastes, with a fun, intuitive interface.

Reduce food waste

Several applications promote community and environmentally friendly initiatives to help reduce food waste: Too Good To Go, Frigo Magic.

Find more details and links to this information on univ-nantes.fr/welcome-toolbox > MEALS

FIND ACCOMMODATION

Discover all the types of housing possible and imaginable

- CROUS housing www.crous-nantes.fr/logements/
- Private housing. You can view options online at <http://www.adele.org/> or at www.mapiaule.com
- Shared housing. Check out the website La Carte des Colocs, designed by roommates for roommates
- Real estate agencies
- Individual property owners
- Low-income housing
- Housing for young professionals.

Don't forget!

When you move into your new place, there are a few things to remember:

- Sign the rental contract and do an inventory (l'état des lieux): carefully read the documents you sign and inspect the condition of the property, it will make the process easier when you move out.
- Give the landlord or rental agency a security deposit or caution.
- Remember to take out home insurance (assurance-habitation) and set up electricity, gas and water.
- Sign up for Internet and/or a mobile phone plan.
- Don't forget that after one year, you'll owe a housing tax for your home.

Find more details and links to this information on univ-nantes.fr/welcome-toolbox > FIND ACCOMMODATION

Get items for cheap

- Second-hand sales in Nantes, Vendée, or around Saint-Nazaire
- La Ressourcerie de l'Île
- Ecocyclerie Yonnaise
- Au Bonheur des Bennes in Saint-Nazaire, Emmaüs,
- Repair Café events
- Handy workshops can help you to fix up your bike, improve your DIY skills, or learn how to repair a seemingly broken toaster.

Find all the links on your INTRANET > WELCOME > Find accommodation > Get items for cheap

Housing assistance

- Housing benefits (APL) from the Caisse d'Allocations Familiales (CAF) can help you pay a portion of your rent.
- Action Logement's Visale system has replaced the CROUS Caution Locative Étudiante (Clé) system.
- Pass Logement de la Région can act as a guarantor for you with your landlord.
- The French government's Chèque Énergie subsidy for utilities.

[GOING OUT]



70 PÔLE ÉTUDIANT STUDENT CENTRE

72 TURBULENCES

73 UNIVERSITY THEATRE

PÔLE ÉTUDIANT STUDENT CENTRE

Bands who have performed here

- Chloé • Arnaud Rebotini
 - Altin Gün • Colin Stetson
 - Fuck Buttons • Giant Swan
 - El-P • Mike Ladd
 - Sage Francis • Nihiloxica
 - Zombie Zombie • Radian
 - Yuksek • The Ex
 - Ninos Du Brazil • Moon Duo
 - C2C • Fishback
 - Waqwaq Kingdom
 - Simian Mobile Disco • Cheveu
 - Matias Aguayo & The Desdemonas
 - Josef Leimberg
- and plenty more...

Directions to the Pôle étudiant

Campus Tertre
Tram line 2, stop Facultés
Bus lines 25 and 83, stop Fac
de Droit
(→ map p. 90 n° 11)

Follow the Student Center events



@Poleetudiant



The Pôle étudiant on the Tertre Campus

The Auditorium of Université de Nantes

Concerts, exhibits, debates, movie screenings, theater..., Pôle étudiant is **the hub of cultural life** at Université de Nantes.

It is a resource for your projects with **spaces dedicated to associations**: shared office space, a meeting room and workshops.

At the Pôle étudiant you will also find all the information about student life in Nantes and services to facilitate your studies.

The Pôle étudiant also has a **cafeteria** open all day and evening.

Université de Nantes Events Calendar

Find out about events online on the university website: univ-nantes.fr/agenda

You will also receive the calendar every 15 days by email: firstname.lastname@etu.univ-nantes.fr



Concert Metz + Le Villejuif Underground + Draha

TURBULENCES

Follow the news on the Turbulences Festival

www.festival-turbulences.fr



<https://www.facebook.com/turbulencesnantes/>

Discover the Turbulences Festival

Each spring, the Turbulences Festival invades the Tertre campus and the city centre.

Organised by Université de Nantes, TU-Nantes, CROUS Pays de la Loire, École des Beaux-Arts de Nantes Saint-Nazaire and Pont Supérieur de Nantes, Turbulences is an art and culture festival held as part of the JACES higher education art and culture days.

For 4 days, the campus hosts concerts, plays, shows, visual art exhibitions and performances created by the students.

There's singing, talking, playing, running, dancing and recitals in all corners of the campus! Numerous events liven up student areas, interspersed with small events outside the walls (DJ sets, dancing, etc.) which invigorate everyday life as a student.



UNIVERSITY THEATRE

Good deals!

Student: with the €5 TU card, all shows cost only €5!

A living space and a cafe

The TU is also a place to get a drink, eat out, chat and have fun, before or after the show.

A place where spectators, actors, dancers, directors, technicians, students and researchers etc. can meet and exchange ideas.

Open from 12 pm to 3:30 pm Monday to Friday and on show nights, 1h before the start of the performance and (long) after the show.

TU-Nantes University Theatre

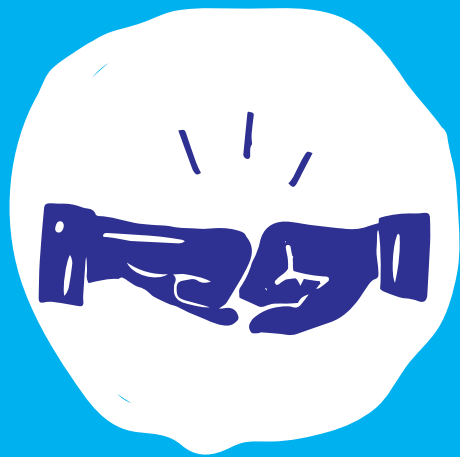
As a place for creating and broadcasting new-generation performing arts, TU-Nantes is a breeding ground for artistic and cultural experiences.

Constantly changing, it encourages productive encounters between artists, students, actors, amateurs, dancers, neighbours and individuals from all backgrounds!

First tries and experiences in the arts, public debuts...

As well as a multitude of advice and places to discover in our Welcome toolbox on

univ-nantes.fr/welcome-toolbox > GOING OUT



[GET INVOLVED]

76 TO BE A STUDENT, TO BE A CITIZEN

76 Energy Saving Actions

77 Management of the waste

78 Student elections

79 Your student representatives

80 STUDENT INITIATIVES

81 FOUNDATION

TO BE A STUDENT, TO BE A CITIZEN

Université de Nantes has adopted a strategy for quality assurance and sustainable development in 2014.

67%

of the University's estate is connected to a heating network (heating via renewable energies).

50
Gwh

This is the university annual consumption of energy (all kinds of energy). This is equivalent to the overall consumption of a city of 120,000 inhabitants.

Aware of the societal challenges, the university acts on its **energetic consumption** and for its **waste management**. You can participate in this collective effort with **simple and common sense eco-friendly actions**.

Energy Saving Actions:

- Switch off your lap-top and its screen after having used it in the computer rooms of the university
- Mark the websites you visit frequently as favorite (this divides up to 4 times the emission of greenhouse gases)
- Always turn off the light when you leave a room, no matter for how long you leave
- Always close the windows when you leave a room
- Always close the main doors of the buildings, especially during winter time



TO BE A STUDENT, TO BE A CITIZEN

Management of the waste

We thank you for separating your recyclables respecting the recycling system of your building. Find out more at your building's reception.

Think Zero waste! Whenever possible, use reusable containers for your afternoon meals and beakers instead of disposable water bottles.

A question, a project?

mte@univ-nantes.fr
univ-nantes.fr/welcome-toolbox > GET INVOLVED



TO BE A STUDENT, TO BE A CITIZEN

Students Elections

You will have to vote for the renewal of the student's representatives of the university councils and of your faculty council.

Student's representatives are elected for a 2-year mandate.

Student elections

University elections provide an excellent moment of democracy learning.

When you elect your representatives within the different university authorities, you choose people who will be your most suitable interlocutors at the University.

When students come together for elections, they legitimate their elected students, with high participation rates.

There are two kinds of student elections at the University:

- elections for central authorities regarding the whole institution
- local elections within the faculties.



TO BE A STUDENT, TO BE A CITIZEN

Your student representatives

Full members of the councils (like the administrative and teaching staff representatives), the student representatives are the most suitable interlocutors between students and the University board.

They give their opinion about degrees' validation methods, scholarship attributions for international mobility or students projects, budget matters, social matters, sports and cultural activities...

Vice-president and Student counsellor

One Vice-president and one Student counsellor are elected for 2 years by the Academics and University Life Commission. Members of the governing body, they are involved in Student Life and elected students matters.

Elected students within the faculties council

Students are elected in your faculty, school or institute. Main decisions regarding academic affairs, research and student life are taken in these councils.

Within central council (→ pp. 98/99)

The elected students in the central authorities deal with Academics policies affairs, budget, University development strategy.

For more information, visit your INTRANET > Engagement et initiatives étudiantes

136 elected students represent you

in all University authorities.

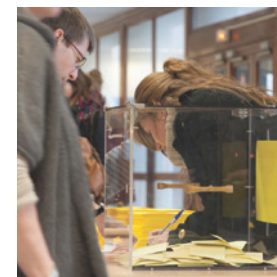
Elected students in the central authorities:

- 6 in the Board of directors;
- 4 PhD students in the Research Commission;
- 16 in the Academics and University Life Commission (CFVU);
- 6 in the International Relations Council (CURI).

To be a candidate

You can become an active member of the university by participating in the governing body in charge of its management.

The elected students get a particular status which allows them to continue their studies during their mandate.



STUDENT INITIATIVES

The university can support your initiatives with advice and funding from the FSDIE, the Fund for Solidarity and Development of Student Initiatives.

Find out all student association contacts and news on:
univ-nantes.fr/associations

Get involved in student associations

The start of an academic year is a perfect time to learn more about student associations, get involved and participate in student life on the campus. Joining a student association is a great immersion experience and it is a good way to share and exchange knowledge. Student associations allow you to experiment and to build your own projects in order to enhance your experience.

Student initiatives

Do you have a project that deals with the University and its student body in Nantes, La Roche-sur-Yon or Saint-Nazaire: exhibits, debates, concerts, theater, sporting events? **The Student Life Office is here to advise and assist you in your thought process and the setting up your personal or group projects.**

Resources to implement your projects in the best conditions possible

The FSDIE (Fund for Solidarity and Development of Student Initiatives) is **destined to finance your projects that stimulate and animate student life** on all the different campuses of Université de Nantes.

Contact and information

dve@univ-nantes.fr
univ-nantes.fr/dve
univ-nantes.fr/portailassos

Pôle étudiant - Student Centre - Campus du Tertre
Tram line 2, stop Facultés (→ map p. 90 n° 11).



FOUNDATION

FONDATION UNIVERSITÉ DE NANTES

For more information,
please refer to our
website:

fondation.univ-nantes.fr

Each donation counts!

An evolving university that benefits to everyone: a foundation that serves its University

Université de Nantes' Foundation brings together a community committed to the University's transformation. It protects the values of transmission and shared knowledge for the benefit of future generations.

Contacts

Fondation de l'Université de Nantes
Bâtiment des Ateliers et Chantiers de Nantes
02 72 64 88 92 - fondation@univ-nantes.fr





[GETTING AROUND]

84 PUBLIC TRANSPORT IN NANTES AND AROUND

85 PUBLIC TRANSPORT IN SAINT-NAZAIRE AND LA ROCHE-SUR-YON

86 CAMPUS MAPS

87 Nantes campus universitaires

88 Centre Loire campus

89 Île de Nantes campus

90 Tertre campus

91 Lombarderie campus

92 La Fleuriaye - Chantrerie campus

93 University campus of La Roche-sur-Yon

94 University campus of Saint-Nazaire

PUBLIC TRANSPORT IN NANTES AND MORE

Nantes

• **Tan**, the public transport system serving greater Nantes: buses, trams, river bus (navibus), busway and airport shuttle.

www.tan.fr

• **Good to know:** Nantes Métropole's solidarity pricing for low-income students:

www.metropole.nantes.fr/services/deplacements-stationnement/aides-deplacement/tarif-tan-solidaire

• **Bicloo**, self-service bike.
www.bicloo.nantesmetropole.fr

• **Géovélo**, the navigation application for cyclists. Plan safe, everyday, fast or tourist itineraries.

www.geovelo.nantesmetropole.fr

• **Velocampus**, bike rental for students
www.velocampus.net

• **Marguerite**, Nantes self-service cars
www.imarguerite.com

• **Car-Sharing**, free car-sharing service:
www.ouestgo.fr

• **Nantes dans ma poche** and **TaKa-Nantes.cool**: 2 apps to get Tram and Bus timetables in real time

Loire-Atlantique

• **Lila**, intercity bus service in Loire-Atlantique, 45 lines serving the local cities.

<http://sedeplacer.loire-atlantique.fr>

Pays de la Loire

• **Destineo**, an online service to map your route using public transportation.
www.destineo.fr

• **TER Pays de la Loire**, the local rail network.

www.ter-sncf.com

At Université de Nantes:

• You will find **bike parking on each campus**.

• All the parking lots are indicated on the campus maps:

univ-nantes.fr/plans

• Public Transports:
univ-nantes.fr/transports



Be aware!

Using your car is not the best way to go to the campuses.
Prefer using public transport or a bike!

PUBLIC TRANSPORT IN SAINT-NAZAIRE AND LA ROCHE-SUR-YON

Saint-Nazaire

• **Stran**, the public transport system serving greater Saint-Nazaire.

www.stran.fr

• **VélYcéo**, with the partnership of the CARENE, bike rental for students.

www.velyceo.com

La Roche-sur-Yon

• **Application Mobilisy** from the La Roche-sur-Yon agglomeration (traffic and itineraries on the network in real time)

• **Impulsyon**, the public transport system in La Roche-sur-Yon.

www.impulsyon.fr

• **La maison du vélo** offers bike rentals
www.centrevelo.wixsite.com/maisonduvelo



To help you get your bearings, here are the campus maps



univ-nantes.fr/plans



Campus universitaires de Nantes

TRANSPORTS	Lignes Chronobus

Wifi univ-nantes ou eduroam dans tous les bâtiments universitaires

La Fleuriaye - Carquefou (O1)

IUT de Nantes - site La Fleuriaye

Centre Loire (O3)

- Présidence/ Amphithéâtre
- Médecine/ Odontologie
- Institut de recherche en santé (IRSUN)
- Pharmacie / BU Santé
- Maison des échanges internationaux et de la francophonie (MEIF)
- Maison des chercheurs étrangers
- IUT de Nantes - Site Joffre
- Maison des sciences de l'homme (MSH)
- Institut d'études avancées IEA

Île de Nantes (O4)

- Formation continue/ Université permanente/ CFA
- Fondation de l'Université de Nantes (Ateliers et Chantiers de Nantes)
- Capacités SAS, filiale de l'Université de Nantes
- IRS2 - Nantes biotech
- Halle à Ouest, pôle interdisciplinaire dédié aux cultures numériques

La Chantrierie (O5)

- Polytech Nantes : école d'ingénieurs de l'Université de Nantes

Lombarderie (O6)

- Sciences et techniques
- Maison des services universitaires :
 - SUIO - Service universitaire d'information et d'orientation
 - Orientation - Parcours - Métiers
 - Service santé des étudiants
 - Relais handicap
 - Service de médecine préventive des personnels de l'université

Tertre (O7)

- Lettres, langues, sciences humaines et sociales
- Isocio, psycho, histoire, histoire de l'art, géol
- Droit, IAE Nantes, Ipaag
- Inspé* : Launay-Violette
- Inspé* : Recteur Schmitt (siège académique)
- STAPS
- SUAPS (Service universitaire des activités physiques & sportives)
- * Institut national supérieur du professorat et de l'éducation

IQUABIAN (O7)

- Pôle agroalimentaire IQUABIAN (4 rue de la Géraudière)

Pôle Bio ouest (O8)

- Cyclotron Arronax



UNIVERSITÉ DE NANTES



Site 03

Campus Centre Loire

Médecine
Odontologie
Pharmacie
IUT de Nantes

- 1 Présidence de l'université
- 2 Faculté de médecine et techniques médicales
Direction de la qualité et du développement durable
- 3 Amphithéâtre - Faculté de médecine
Pôle gestion et développement des compétences
- 4 Faculté des sciences pharmaceutiques et biologiques
BU Santé
- 5 Faculté d'odontologie
- 6 Institut de recherche en santé de l'université (IRSUN)
- 7 École de sages-femmes
Hôpital mère-enfant - Maternité
- 8 Maison des échanges internationaux et de la francophonie (MEIF)
Maison des chercheurs étrangers
- 9 Direction du plan, de l'immobilier et de la logistique
- 10 École nationale supérieure maritime (ENSM)
38, rue Gabriel Péri - Nantes
- 11 Institut d'études avancées (IEA) de Nantes
Maison des sciences de l'homme (MSH) Ange Guépin
- 12 Direction du plan, de l'immobilier et de la logistique
- 14 Direction de la recherche, des partenariats et de l'innovation - Service partenariat et innovation
- 15 IUT de Nantes

TRANSPORTS

- Station Bicyclo proche
- Busway - ligne 4
- Chronobus - ligne C2
- Tramway - ligne 1
- Bus - ligne 26
- Chronobus - ligne C3
- Tramway - ligne 2
- Chronobus - ligne C1
- Chronobus - ligne C4
- Tramway - ligne 3

Pour plus d'infos, rdv sur www.tan.fr



Site 04

Campus Île de Nantes

Formation continue
Fondation de l'Université de Nantes
Capacités
IRS 2 Nantes Biotech
Halle 6 Ouest - Pôle interdisciplinaire dédié aux cultures numériques

- 1 Formation continue
Université permanente
CFA Formasup
Fondation de l'Université de Nantes
(Ateliers et chantiers de Nantes)
- 2 Capacités SAS, filiale de l'Université de Nantes
(Bât. Atlantica)
- 3 IRS 2 - Nantes Biotech
- 4 Halle 6 Ouest - Pôle interdisciplinaire dédié aux cultures numériques (42 rue de la Tour d'Auvergne)

TRANSPORTS

- Station Bicyclo proche
- Busway - ligne 4
- Chronobus - ligne C5
- Tramway - ligne 1
- Bus - ligne 26
- Chronobus - ligne C3
- Tramway - ligne 2
- Chronobus - ligne C1
- Chronobus - ligne C4
- Tramway - ligne 3

Pour plus d'infos, rdv sur www.tan.fr





Site 07

Campus Tertre

Lettres, langues, sciences humaines et sociales, droit, IAE Nantes - Économie & management, professorat et éducation (Inspé), STAPS

- | | |
|--|---|
| 1 Château du Tertre | 11 Pôle étudiant |
| 2 Local technique | 12 Lettres et langues - Bât. Censive |
| 3 Scolarité lettres, langues, sciences humaines et sociales (LLSHS) UFR histoire, histoire de l'art et archéologie, UFR sociologie/ Faculté de psychologie, Service universitaire des langues Formation continue LLSHS | 13 Théâtre universitaire |
| 4 Café/ Stéphane Hessel Bât. Nouveau Tertre | 14 IAE Nantes/ Entrepreneuriat étudiant - Bât. Petit-Port |
| 5 Géographie et aménagement régional (IGARUN) Pôle audiovisuel multimédia (IPAM) | 15 SUAPS (Service universitaire des activités physiques et sportives) |
| 6 Bu Lettres | 16, 17, 18 Granges 1 et 2, dojo, vestiaire |
| 7 Droit et sciences politiques/ IPAG | 19, 20 UFR STAPS/ Amphithéâtre |
| 8 Langues et cultures étrangères | 21 Inspé - Institut national supérieur du professorat et l'éducation |
| 9 IAE Nantes - Bât. Erdre | 22 Site de Nantes - Lasunay-Violette |
| 10 BU Droit | 23 Inspé - Salles de Formation continue - Bât. C0 |
| | 24 Inspé - Siège académique - Administration - Bât. E0 |
| | 25 Amphithéâtre et salles de cours UFR STAPS - Bât. F0 |
| | 26 Logements |

- TRANSPORTS
- Station Bicclos proche
 - Tramway - ligne 2
 - Bus - ligne C20
 - Bus - ligne 26
 - Bus - ligne 64
 - Bus - ligne 75
 - Bus - ligne 80
 - Bus - ligne 86
 - Ligne express E5
- Pour plus d'infos, rdv sur www.tan.fr



Site 06

Campus Lombarderie

Sciences et techniques
Maison des services universitaires

- | | |
|--|---|
| 1 Bât. administratif, scolarité | 21 Base d'avion |
| 2 Bât. enseignement Amphl Pasteur | 22 Chimie et interdisciplinarité : synthèse, analyse et modélisation (CEISAM) |
| 3 Recherche Physique | 23 Comité des personnels (CPUN) |
| 4 Recherche Géologie | 24 Centre François Vilté |
| 5 Laboratoire de planétologie et géodynamique | 25 Bât. Erdre (Enseignement) |
| 6 TP Zoologie Botanique | 26 ISOMER |
| 7 TP Bio animale et taxo-écologie | 27 Amphis F, G, H |
| 8 Serres | 28 Café/ |
| 9 Recherche Biologie et physicochimie cellulaire | 29 Imprimerie centrale |
| 10 Recherche Maths | 30 Institut des matériaux - Jean Rouxel |
| 11 Laboratoire de mathématiques - Jean Leray | 31 Microcaractérisation |
| 12 Laboratoire des sciences du numérique - LS2N | 32 Laboratoire des sciences du numérique - LS2N |
| 13 TP Chimie | 34 Maison des services universitaires |
| 14 TP Physique | Orientation - Parcours - Méliens (SUJO) |
| 15 Bât. Enseignement Informatique | Service de santé des étudiants (SUMPPS) |
| 16 Services techniques | Médecine du personnel (MPPU) |
| 18 BU Sciences | Relais handicap |

- TRANSPORTS
- Station Bicclos proche
 - Tramway - ligne 2
 - Autobus - ligne 23
 - Autobus - ligne 70
- Pour plus d'infos, rdv sur www.tan.fr





Site 01
Campus La Fleuriaye
 (Carquefou)
 IUT de Nantes

IUT de Nantes
 Centre de documentation

TRANSPORTS
 Ligne Express E5
 Autobus - ligne 75
 Autobus - ligne 95
 Parking relais TAN

Pour plus d'infos, rdv sur www.tan.fr

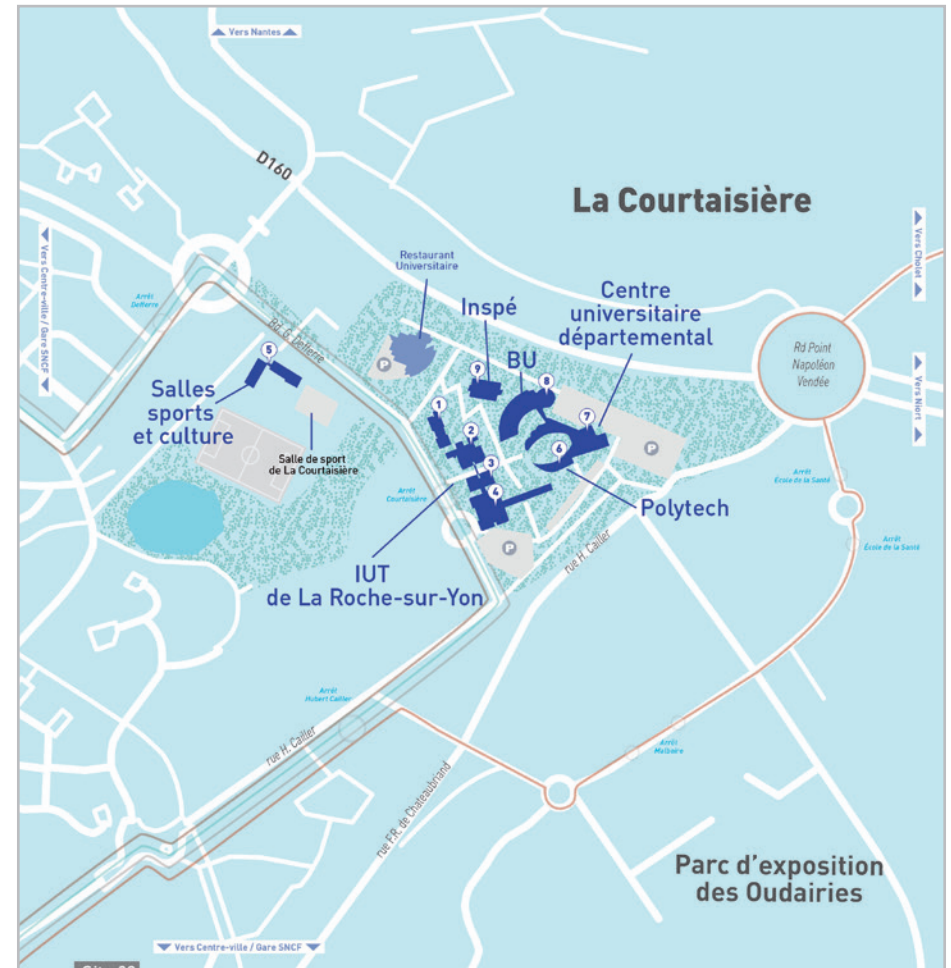
Wi-Fi univ-nantes ou eduram dans tous les bâtiments universitaires

Site 05
Campus La Chantrerie
 Polytech Nantes
 BU Technologies

- 1 Polytech Nantes
Bâtiment RESTE
- 2 Polytech Nantes
Bâtiment ISITEM
- 3 BU Technologies
Institut de l'Homme et de la Technologie (IHT - Polytech Nantes)
- 4 Recherche ETMPA
(Énergie thermique, matériaux et procédés associés)

TRANSPORTS
 Ligne Express E5
 Autobus - ligne 75
 Chronobus - ligne C4
 Parking relais TAN

Pour plus d'infos, rdv sur www.tan.fr



Site 02
Campus de La Roche-sur-Yon
 Centre universitaire départemental
 INSPÉ - IUT de La Roche-sur-Yon

- 1 0 4 IUT de La Roche-sur-Yon
- 5 Salles sports (SUAPS) et culture
- 6 0 8 Centre universitaire départemental Polytech
BU La Roche-sur-Yon
- 9 INSPÉ (Institut national supérieur du professorat et l'éducation)

TRANSPORTS
 Bus - ligne 7A
 Bus - ligne 7B
 Bus - ligne F
 Bus - ligne H*
 *Uniquement en période scolaire
 Pour plus d'infos, rdv sur l'appli mobility

Wi-Fi univ-nantes ou eduram dans tous les bâtiments universitaires





Site 09

Campus de Saint-Nazaire

IUT de Saint-Nazaire
Centre universitaire
Gavy-Océanis

Heinlex

- 1a Génie civil 2
- 1b Génie civil 1
- 2 Mesures Physiques 1
- 3 Espace technologique MP/GIM
- 4 Mesures Physiques - Génie Industriel et maintenance
- 5 Génie chimique 1
- 6 Tech. Commerc.
- 7 Administration
- 8 Formation continue
+ Centre documentation de l'IUT
- 9 Génie chimique - GP
- 10 Amphi A - Amphi B

Gavy-Océanis

- 11 Chaufferie
- 12 Hall technologique GIM
- 13 Amphi C - SUAPS
- 14 GLT
- 15 Soute à produits chimiques
- 16 Logements
- 17 Labo recherche GEM
- Gavy-Océanis**
- 18 Centre de recherche et de transfert de technologies (CRTT) René Kerviler
- 19 Centre universitaire Gavy-Océanis
BU Saint-Nazaire - Polytech
- 20 Plateforme R&D Algosolis

TRANSPORTS
Ligne Hélyce
Bus - ligne U1
Bus - ligne U3
Pour plus d'infos, rdv sur www.stran.fr

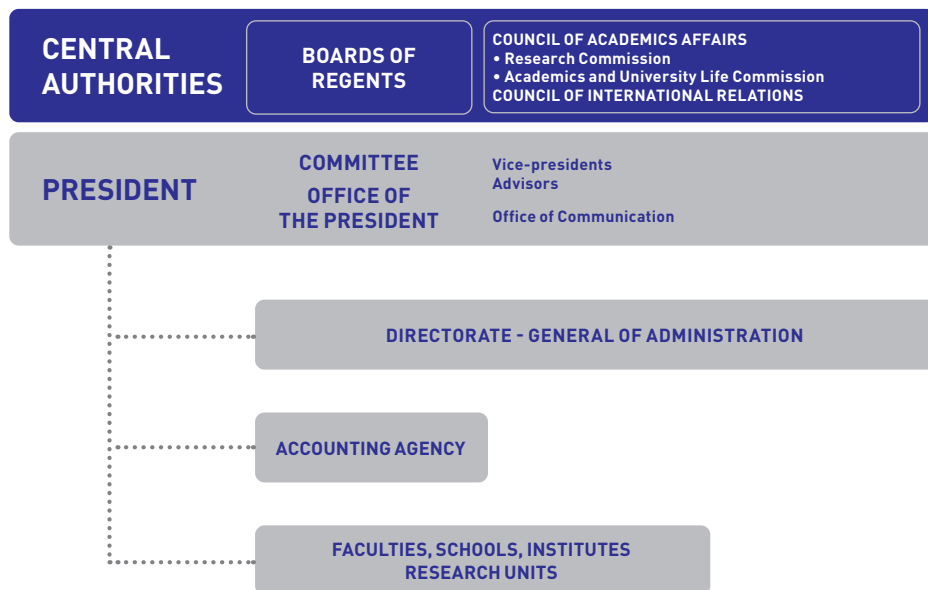


[DISCOVER]



98 THE GOVERNANCE OF UNIVERSITÉ DE NANTES

THE GOVERNANCE OF UNIVERSITÉ DE NANTES



The elected members

The elected members come from the whole university community and represent professors, administrative and technical staff (BIATSS) and the student body.

External members are also represented in the University Councils.

The elected members are involved in the democratic life of the institution and collectively make decisions about the University.

THE GOVERNANCE OF UNIVERSITÉ DE NANTES

Two levels of decision making exist: an executive and a legislative level.

The executive branch

The University is headed by a president who is assisted by a committee (*bureau*) elected for 4 years by the Board of Regents. The committee is composed of the vice-presidents and advisors.

The legislative branch: the councils

The main decisions which guide the executive branch are taken by the councils and the commissions which are composed of professors, administrative and technical staff and students. They are divided in two levels:

- **The University level, the central level** (Board of Regents, Council of Academic Affairs, Research Commission, Academics and University Life Commission, International Relations Council)
- **The component level, the local level**

Administration's Executive Management

The Administration's Executive Management coordinates and organizes all administrative, financial and technical services of the University.

These services are organized regarding two main missions:

- management and development
- support to academic activities.

These services implement the policy of the University under the authority of the General Director of the Services.

Faculties (also known as UFR), schools, institutes, departments, laboratories

The university consists of 20 components: 11 faculties and academic and research units (UFR), 6 institutes, 1 school for teacher training, 1 engineering school and 1 observatory of Earth and planetary sciences.

In general, these components consist of academic departments and research laboratories. They have their own management board.

[FIND OUT MORE]



102 USEFUL CONTACTS

109 GLOSSARY

112 NOTES

Find here the useful contacts



USEFUL CONTACTS

Your registrar's office

Find all the contact information for the registrar's office on your

INTRANET > SCOLARITÉ, INSCRIPTION, CALENDRIER



New Tertre Campus

● Law, economics and management

IAE-Nantes

Erdre Building

Chemin de la Censive du Tertre
BP 52231
44322 Nantes CEDEX 3
+33 (0)240 14 17 17
(→map p. 90 n° 9)

Petit-Port Building

Chemin de la Censive du Tertre
BP 62232
44322 Nantes CEDEX 3
+33 (0)276 64 18 00
iae.univ-nantes.fr
(→map p. 90 n° 14)

Maritime school

38 rue Gabriel Péri
BP 90303
44103 Nantes CEDEX 04
+33 (0)9 70000300
(→map p. 72 n° 10)

Institute of General Administration (IPAG)

Chemin de la Censive du Tertre
BP 81307
44313 Nantes CEDEX 3
+33 (0)240 14 16 11
ipag.univ-nantes.fr
(→map p. 90 n° 7)

Law and political sciences

Chemin de la Censive du Tertre
BP 81307
44313 Nantes CEDEX 3
+33 (0)240 14 15 15
droit.univ-nantes.fr
(→map p. 90 n° 7)

University library law

Chemin de la Censive du Tertre
BP 12236
44322 Nantes CEDEX 3
+33 (0)253 52 25 00
bu-droit-contact@univ-nantes.fr
(→map p. 90 n° 10)

USEFUL CONTACTS

● Languages

Foreign languages
and cultures

Chemin de la Censive du Tertre
BP 81 227
44312 Nantes CEDEX 3
+33 (0)240141299
flce.univ-nantes.fr
(→ map p. 90 n° 8)

● Letters
and social sciencesFrench literature
and Humanities

Chemin de la Censive du Tertre
BP 81 227
44312 Nantes CEDEX 3
+33 (0)253522200
lettreslangages.univ-nantes.fr
(→ map p. 90 n° 12)

Institute of Geography
and regional planning
(IGARUN)

Chemin de la Censive du Tertre
BP 81 227
44312 Nantes CEDEX 3
+33 (0)253487552 (morning)
+33 (0)253487512 (afternoon)
igarun.univ-nantes.fr
(→ map p. 90 n° 5)

History, art history
and archaeology

Chemin de la Censive du Tertre
BP 81 227
44312 Nantes CEDEX 3
+33 (0)253522551
histoire.univ-nantes.fr
(→ map p. 90 n° 3)

● Psychology

Chemin de la Censive du Tertre
BP 81 227
44312 Nantes CEDEX 3
+33 (0)253522649
psychologie.univ-nantes.fr
(→ map p. 90 n° 3)

● Sociology

23 rue du Recteur Schmitt
44312 Nantes CEDEX 5
+33 (0)253487755
sociologie.univ-nantes.fr
(→ map p. 90 n° 3)

University library
of Letters

Chemin de la Censive du Tertre
BP 32211
44322 Nantes CEDEX 3
+33 (0)240141332
bu-lettres-contact@univ-nantes.fr
(→ map p. 90 n° 4)

USEFUL CONTACTS

● Health

Medicine and Medical
Technology

1 rue Gaston Veil
44035 Nantes CEDEX 1
+33 (0)240412828
medecine.univ-nantes.fr
(→ map p. 88 - n° 2)

● Dentistry

1 place Alexis Ricordeau
BP 84215
44042 Nantes CEDEX 1
+33 (0)240412921
odonto.univ-nantes.fr
(→ map p. 88 - n° 5)

Pharmaceutical
and biological sciences

9 rue Bias
BP 61112
44035 Nantes CEDEX 1
+33 (0)253484100
pharmacie.univ-nantes.fr
(→ map p. 88 - n° 4)

University library of Health

9 rue Bias
BP 61112
44011 Nantes CEDEX 1
+33 (0)253484700
bu-sante-contact@univ-nantes.fr
(→ map p. 88 - n° 4)

Science and technology of
sports and physical activity
(STAPS)

25 bis boulevard Guy Mollet
BP 72206
44322 Nantes CEDEX 3
+33 (0)251837200
staps.univ-nantes.fr
(→ map p. 90 n° 19)

● Sciences

Sciences and technology

2 rue de la Houssinière
BP 92208
44322 Nantes CEDEX 3
+33 (0)251125212
sciences-techniques.univ-nantes.fr
(→ map p. 91)

University library of Sciences

Lombarderie Campus
2 rue de la Houssinière
BP 82207
44322 Nantes CEDEX 3
+33 (0)251125220
bu-sciences-contact@univ-nantes.fr
(→ map p. 91 - n° 18)

● University campus
of Saint-Nazaire

Gavy campus
Boulevard de l'université
BP 152
44603 Saint-Nazaire CEDEX
+33 (0)240905040
polesn.univ-nantes.fr
(→ map p. 94)

University library
of Saint-Nazaire
(Library Étienne Garnier)

Campus de Gavy Océanis
Boulevard de l'Université
BP 152
44603 Saint-Nazaire CEDEX
+33 (0)240905096
bu-saintnazaire-contact@univ-nantes.fr
(→ map p. 94 - n° 19)

● University campus
of La Roche-sur-Yon

Pôle universitaire yonnais
221 rue Hubert Cailler
CS 50020
85035 La Roche-sur-Yon
+33 (0)253804100
polelrsv.univ-nantes.fr
(→ map p. 93)

University library
of La Roche-sur-Yon

221 rue Hubert Cailler
CS 50020
85035 La Roche-sur-Yon
CEDEX
+33 (0)253804134
bu-larochesuryon-contact@univ-nantes.fr
(→ map p. 93 - n° 8)



Campus Lombarderie

USEFUL CONTACTS

● Technology

IUT of Nantes

La Fleuriaye campus
2 avenue du Pr Jean Rouxel
BP 539
44475 Carquefou CEDEX
+33 (0)22809 2000
(→ map p. 92)

Nantes campus

3 rue Maréchal Joffre
BP 34 103
44041 Nantes CEDEX 1
+33 (0)240306090
(→ map p. 88 - n° 15 à 17)
iutnantes.univ-nantes.fr

IUT of Saint-Nazaire

58 rue Michel Ange - BP 420
44 606 Saint-Nazaire CEDEX
+33 (0)240 1781 59
iut-sn.univ-nantes.fr
(→ map p. 94)



Pharmacy Building and Health Library

IUT of La Roche-sur-Yon

18 boulevard Gaston Defferre
cs 50 020
85 035 La Roche-sur-Yon
CEDEX
+33 (0)253 80 41 00
iutlaroche.univ-nantes.fr
(→ map p. 93 - n° 1 à 4)

Polytech Nantes

Engineering School
of Université de Nantes
La Chantrerie campus
Rue Christian Pauc
CS 50 609
44 306 Nantes CEDEX 3
+33 (0)240 68 32 00
(→ map p. 92)

Gavy campus

Gavy Océanis
CS 70 152
44 603 Saint-Nazaire CEDEX
+33 (0)240 90 50 30
polytech.univ-nantes.fr
(→ map p. 94)

Site de la Courtaisière

18 boulevard Gaston Defferre
85 035 La Roche-sur-Yon CEDEX
+33 (0)251 47 40 00
polytech.univ-nantes.fr
(→ map p. 94)

University library of Technology

La Chantrerie campus
Rue Christian Pauc
BP 70 611
44 306 Nantes
+33 (0)251 85 74 42/43
bu-technologies-contact@univ-nantes.fr
(→ map p. 92 - n° 3)

● National Higher Institute of Teachers' Training and Education (Inspé)

23 rue Recteur Schmitt
BP 92 235
44 322 NANTES CEDEX 3
+33 (0)253 59 23 00
inspe.univ-nantes.fr
(→ map p. 90 - n° 23)

● Associated and Partner Libraries

univ-nantes.fr/BU
> BIBLIOTHÈQUES ASSOCIÉES
ET PARTENAIRES

● Permanent University

Building "Ateliers et chantiers de Nantes"
2 bis bd Léon Bureau
Bureau 2016
44 200 Nantes
+33 (0)272 64 88 64
univ-perm@univ-nantes.fr
(→ map p. 89 - n° 1)

USEFUL CONTACTS

● Services

DVE - Student Life Office

Pôle étudiant
Chemin de la Censive du Tertre
BP 41 214
44 312 Nantes CEDEX 3
+33 (0)272 64 04 40
dve@univ-nantes.fr
(→ map p. 90 - n° 11)

DCI - Culture and Initiatives Office

Pôle étudiant
Chemin de la Censive du Tertre
BP 41 214
44 312 Nantes CEDEX 3
+33 (0)272 64 04 53
culture@univ-nantes.fr
(→ map p. 90 - n° 11)

Quality and sustainable Development Office

dqdd@univ-nantes.fr



DRI - International Relations Office

Maison des échanges internationaux et de la francophonie (MEIF)
15 Chaussée de la Madeleine
BP 13 522
44 035 Nantes CEDEX 1
+33 (0)253 462 162
international@univ-nantes.fr
(→ map p. 88 - n° 8)

Student health center

Maison des services
110 bd Michelet
BP 32 238
44 322 Nantes CEDEX 3
+33 (0)240 37 10 50
+33 (0)240 37 10 69
sumpps@univ-nantes.fr
(→ map p. 91 - n° 35)

Disabled Students Office

Maison des services
110 bd Michelet
BP 42 212
44 322 Nantes CEDEX 3
+33 (0)240 37 10 35
relais.handicap@univ-nantes.fr
(→ map p. 91 - n° 35)

Professional Integration Office

Maison des services
110 bd Michelet
BP 42 212
44 322 Nantes CEDEX 3
+33 (0)240 37 10 00
suio@univ-nantes.fr
(→ map p. 91 - n° 35)

Entrepreneurship service

IAE (bâtiment Petit Port, bureau 112)
Chemin de la Censive du Tertre
BP 62 232
44 322 Nantes CEDEX 3
+33 (0)276 64 18 29
entrepreneuriat@univ-nantes.fr
(→ map p. 90 - n° 14)

Language Center & languages resources center

Chemin de la Censive du Tertre
Bâtiment 3 - 3^e étage
BP 81 227
44 312 Nantes CEDEX 3
servicelangues@univ-nantes.fr
(→ map p. 90 - n° 3)

SUAPS - Sports

3 boulevard Guy Mollet
44 300 Nantes
+33 (0)240 99 84 48
suaps@univ-nantes.fr
(→ map p. 90 - n° 15)

● Vocational Training Center (CFA) inter-universities

Building "Ateliers et chantiers de Nantes"
2 bis bd Léon Bureau
44 200 Nantes
+33 (0)272 64 88 71
www.cfainteruniversites.com
(→ map p. 89 - n° 1)



[FIND OUT MORE]

109

Here is a useful glossary
for all you need to know



GLOSSARY

BU

University Library. There are 7 locations:

- BU Law
- BU Humanities
- BU Health
- BU Sciences
- BU Technologies
- BU of La Roche-sur-Yon
- BU of Gavy Saint-Nazaire

CM

Lecture [cours magistral]

Components

The UFRs, faculties, institutes and school are the components of Université de Nantes.

Credits/ECTS

The credit system provides credits valid in the countries of the European Higher Education Area. It is sort of a "common currency". Each validated course unit (UE) gives a certain number of credits, based on a maximum of 30 credits per semester.

The credits earned are permanently capitalizable. They are transferable (subject to acceptance by the teaching staff) in France and Europe, that is to say, the students' achievements are recognized and they can continue their studies in another institution without starting over.

CRL

Languages Resource Center

DCI

Culture and Initiatives Office

DFVE

Office of Training and Student life

DEI

European and international Office

Field of study

All the LMD programs are grouped into fields. One field is composed of several disciplines. Université de Nantes offers four fields:

- Arts, humanities, languages
- Law, economics, management
- Social sciences
- Science, technology, health

Each field is subdivided into majors and in some cases each major is divided into specialities.

GLOSSARY

ECTS

See Credits

Erasmus +

Programme funded by the European Union to support the European activities of higher education institutions, in particular student and staff exchanges.

FSDIE

A fund for solidarity and development of student initiatives. It provides financial support for student projects that animate student life on the campuses.

LMD

Licence - Master - Doctorate

Options

Students can personalize their course of study by choosing options.

Pix

Digital skills certificate

RU

University restaurant

S1-S2

Semester 1 - semester 2

SUAPS

Department of sports and physical activities

SUIO

University information and guidance service

SUL

The languages center

SUMPPS

Department of preventive medicine and health promotion.

This is the students' health service.

TD

Tutorials [Travaux dirigés]

TP

Labs [Travaux pratiques]

UE

Course unit [Unité d'enseignement]

UED

Introductory course unit [Unité d'enseignement découverte]

UFR

Training and research unit
Faculties are now called UFRs
Certain faculties have kept the name "faculty".

[NOTES]

112



A series of horizontal dotted lines for writing notes.

[NOTES]

113



A series of horizontal dotted lines for writing notes.

[NOTES]

118



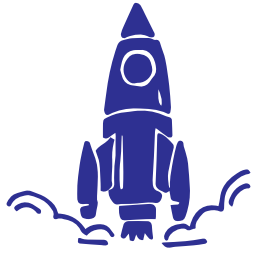
A series of horizontal dotted lines for writing notes.

[NOTES]

119



A series of horizontal dotted lines for writing notes.





UNIVERSITÉ DE NANTES